



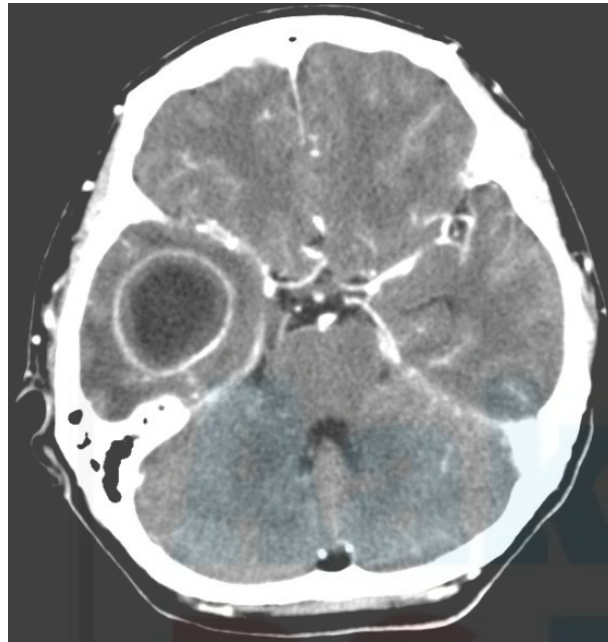
Aakash
PG Plus

ENT

NEET PG 2021

RECALL QUESTIONS AND ANSWERS

1. A patient with history of chronic middle ear infection, now presented with neurological manifestations of headache and vomiting. CT brain is shown. What is the likely diagnosis?



- A. Temporal lobe abscess
- B. Cerebral abscess
- C. Extradural abscess
- D. Meningitis

2. A woman presented to ENT OPD with complaint of nasal obstruction. On examination, greenish-black crust is seen in nasal cavity covering turbinate and septum. Merciful anosmia is also present. What other sign will you find in this case on examination?

- A. Roomy nose
- B. Nasal polyps
- C. Foreign body
- D. Inferior turbinate hypertrophy

3. A 35 years old male presented with epistaxis. Conservative management was done to stop the bleeding but it failed. What will be the next step of management?

- A. Maxillary artery ligation
- B. Endoscopic sphenopalatine artery ligation
- C. ICA ligation
- D. ECA ligation

4. A child post-tonsillectomy presented with bleeding in the ward along with presence of clots. Which of the following should be done?

- A. Take to OT, remove the clot and ligate
- B. Take to OT and do pressure packing
- C. Conservative management
- D. Cautery

5. What is the indication of use for the vial shown in the given image?



- A. Subglottic stenosis
- B. Inlay type myringoplasty
- C. Post adenoidectomy to control bleeding
- D. Rhinocerebral mucormycosis

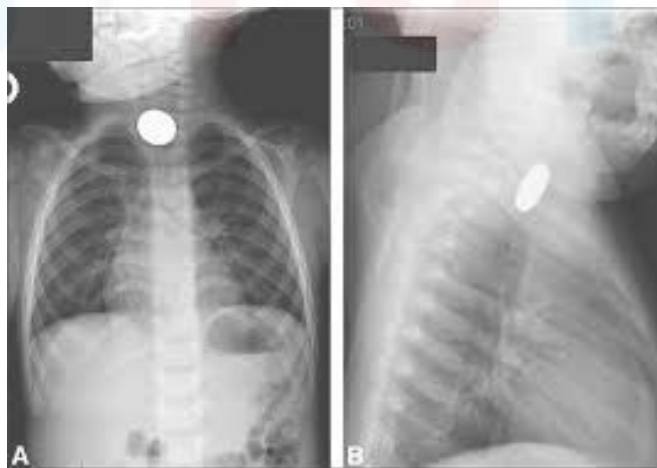
6. A post-thyroidectomy patient was being extubated. The anesthesiologist found it difficult to extubate as the patient presented with repeated obstruction. Which of the following could be the cause?

- A. B/L RLN injury
- B. U/L RLN injury
- C. B/L SLN injury
- D. Hemorrhage

7. A patient underwent submandibular gland excision and Wharton's duct was ligated in the process. Which of the following nerve is most likely to be damaged?

- A. Hypoglossal nerve
- B. Lingual nerve
- C. Glossopharyngeal nerve
- D. Chorda tympani nerve

8. A child was brought by his mother with history of Difficulty in swallowing. On enquiry, she informed that the child was playing alone. X-ray was done as shown. What is the most likely site of foreign body lodging?



- A. Trachea
- B. Larynx
- C. Esophagus
- D. Bronchus

ANSWERS

- 1.A
- 2.A
- 3.B
- 4.A
- 5.A
- 6.A
- 7.B
- 8.C



Aakash
PG Plus