

29/01/2025

Morning



# Aakash

Medical | IIT-JEE | Foundations

Corporate Office : AESL, 3rd Floor, Incuspaze Campus-2, Plot-13, Sector-18, Udyog Vihar,  
Gurugram, Haryana-122018

## Memory Based Answers & Solutions

Time : 3 hrs.

for

M.M. : 300

## JEE (Main)-2025 (Online) Phase-1

(Physics, Chemistry and Mathematics)

### IMPORTANT INSTRUCTIONS:

- (1) The test is of **3 hours** duration.
- (2) This test paper consists of 75 questions. Each subject (PCM) has 25 questions. The maximum marks are 300.
- (3) This question paper contains **Three Parts**. **Part-A** is Physics, **Part-B** is Chemistry and **Part-C** is **Mathematics**. Each part has only two sections: **Section-A** and **Section-B**.
- (4) **Section - A** : Attempt all questions.
- (5) **Section - B** : Attempt all questions.
- (6) **Section - A (01 – 20)** contains 20 multiple choice questions which have **only one correct answer**. Each question carries **+4 marks** for correct answer and **-1 mark** for wrong answer.
- (7) **Section - B (21 – 25)** contains 5 **Numerical value** based questions. The answer to each question should be rounded off to the **nearest integer**. Each question carries **+4 marks** for correct answer and **-1 mark** for wrong answer.

Delivering Champions Consistently

**JEE (Advanced) 2024**

AIR	Name	Classroom
25	Rishi Shekher Shukla	2 Year Classroom
67	Krishna Sai Shishir	2 Year Classroom
78	Abhishek Jain	2 Year Classroom
93	Hardik Aggarwal	2 Year Classroom
95	Ujjwal Singh	2 Year Classroom
98	Rachit Aggarwal	2 Year Classroom

**JEE (Main) 2024**

AIR	Name	Classroom	State
1	Sarvvi Jais	2 Year Classroom	Karnataka Topper
15	M Sai Divya Tuja Reddy	2 Year Classroom	Telangana Topper
19	Rishi Shekher Shukla	2 Year Classroom	Telangana Topper

**PHYSICS**

**SECTION - A**

**Multiple Choice Questions:** This section contains 20 multiple choice questions. Each question has 4 choices (1), (2), (3) and (4), out of which **ONLY ONE** is correct.

**Choose the correct answer:**

- Assertion:** At the peak of mountain, time period of pendulum increases.  
**Reason:** Time period of pendulum increases with decrease in  $g$ .  
(1) Assertion is correct, reason is incorrect  
(2) Assertion is incorrect, reason is correct  
(3) Assertion is incorrect, reason is incorrect  
(4) Assertion is correct, reason is correct

**Answer (4)**

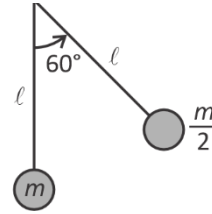
**Sol.**  $T = 2\pi\sqrt{\frac{l}{g}}$

- The velocity of a particle moving on a straight line varies with time as  $v = At^2 + \frac{Bt}{C+t}$  where  $A, B, C$  are constants. Find the dimensions of  $ABC$ .  
(1)  $L^2 T^{-2}$   
(2)  $L^2 T^{-1}$   
(3)  $L^2 T^{-3}$   
(4)  $L T^{-3}$

**Answer (3)**

**Sol.**  $[v] = [A][t^2] = \frac{[B][t]}{[C]} = LT^{-1}$   
 $\Rightarrow [A] = LT^{-3}$   
 $[B] = LT^{-1}$   
 $[C] = T$   
 $[ABC] = L^2 T^{-3}$

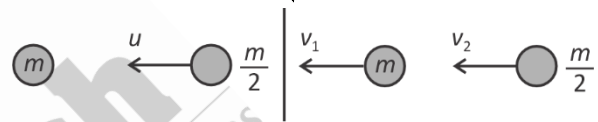
- A pendulum of mass  $\frac{m}{2}$  is released from given situation, find speed of another pendulum after collision ( $\odot = 1$ )



- (1)  $\sqrt{\frac{3}{2}gl}$
- (2)  $\frac{2}{3}\sqrt{gl}$
- (3)  $\sqrt{\frac{gl}{3}}$
- (4)  $\frac{1}{3}\sqrt{gl}$

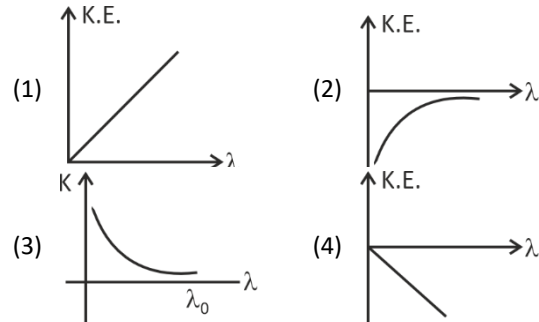
**Answer (2)**

**Sol.** Speed before collision =  $\sqrt{2 \cdot g \cdot \frac{l}{2}} = \sqrt{gl}$



$\frac{m}{2}u = mv_1 + \frac{m}{2}v_2$   
 $u = 2v_1 + v_2$   
 $u = v_1 - v_2$   
 $v_1 = \frac{2u}{3} = \frac{2}{3}\sqrt{gl}$

- The graph between wavelengths ( $\lambda$ ) of incident light and kinetic energy (K.E.) of photoelectrons in photoelectric effect is



**Answer (3)**

**Sol.**  $\frac{hc}{\lambda} = \frac{hc}{\lambda_0} + KE$        $K = \frac{a}{\lambda} - b$

**Delivering Champions Consistently**

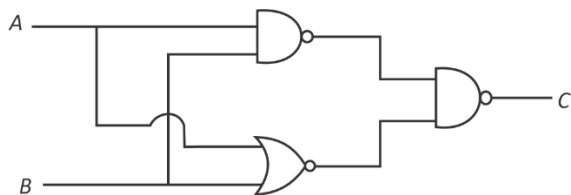
**JEE (Advanced) 2024**

<b>AIR 25</b> Rishi Shekher Shukla 2 Year Classroom	<b>AIR 67</b> Krishna Sai Shishir 2 Year Classroom	<b>AIR 78</b> Abhishek Jain 2 Year Classroom	<b>AIR 93</b> Hardik Aggarwal 2 Year Classroom	<b>AIR 95</b> Ujjwal Singh 2 Year Classroom	<b>AIR 98</b> Rishabh Aggarwal 2 Year Classroom
---	--	--	--	---	---

**JEE (Main) 2024**

<b>Karnataka Topper</b> <b>AIR 1</b> Sanyu Jais 2 Year Classroom	<b>Telangana Topper</b> <b>AIR 15</b> M Sai Divya Teja Reddy 2 Year Classroom	<b>Telangana Topper</b> <b>AIR 19</b> Rishi Shekher Shukla 2 Year Classroom
---	--	--

5. Identify the logic gate represented by the circuit shown below.



- (1) OR Gate                      (2) NAND Gate  
 (3) AND Gate                    (4) NOR Gate

**Answer (1)**

**Sol.**  $C = \overline{(AB)(A+B)}$                       De Morgan Rule  
 $= AB + A + B$                                    $\overline{\overline{X} \overline{Y}} = X + Y$   
 $= A + B$   
*i.e.* OR Gate

6. **Statement-1:** Electromagnetic wave have both energy and momentum.

**Statement-2:** Rest mass of photon is zero.

- (1) Statement-1 is correct, statement-2 is correct  
 (2) Statement-1 is correct, statement-2 is incorrect  
 (3) Statement-1 is incorrect, statement-2 is correct  
 (4) Statement-1 is incorrect, statement-2 is incorrect

**Answer (1)**

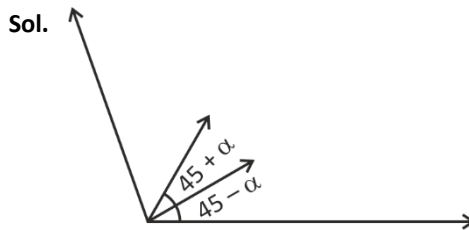
**Sol.** Because of radiation pressure, EMW exerts force must carry momentum.

According to special relativity theory, no massive particle can attain speed of light.

7. Two projectile were launched from same position simultaneously only same speed on of the projectile was launched at angle  $(45 - \alpha)^\circ$  and the other at an angle of  $(45 + \alpha)^\circ$ . Find the ratio of maximum height of the projectile.

- (1)  $\frac{1 - \sin\alpha}{1 + \sin\alpha}$                       (2)  $\frac{1 - \sin 2\alpha}{1 + \sin 2\alpha}$   
 (3)  $\frac{1 - \tan\alpha}{1 + \tan\alpha}$                       (4)  $\frac{1 - \cos\alpha}{1 + \cos\alpha}$

**Answer (2)**



$$2gh_1 = 4^2 \sin^2(45 - \alpha)$$

$$2gh_2 = 4^2 \sin^2(45 + \alpha)$$

$$\Rightarrow \frac{h_1}{h_2} = \frac{\left(\frac{\cos\alpha}{\sqrt{2}} - \frac{\sin\alpha}{\sqrt{2}}\right)^2}{\left(\frac{\cos\alpha}{\sqrt{2}} + \frac{\sin\alpha}{\sqrt{2}}\right)^2}$$

$$\Rightarrow \frac{h_1}{h_2} = \frac{\cos^2\alpha + \sin^2\alpha - 2\sin\alpha\cos\alpha}{\cos^2\alpha + \sin^2\alpha + 2\sin\alpha\cos\alpha}$$

$$\Rightarrow \frac{h_1}{h_2} = \frac{1 - \sin 2\alpha}{1 + \sin 2\alpha}$$

8. A river is flowing with speed 9 km/h. Boat is going downstream. Speed of boat in still water is 27 km/h. A person in boat throws a ball upwards with speed 10 m/s. Find range of the ball as seen by an observer at bank of river

- (1) 10 m                                      (2) 20 m  
 (3) 25 m                                      (4)  $20\sqrt{3}$  m

**Answer (2)**

**Sol.**  $T = \frac{2u}{g} = \frac{2 \times 10}{10} = 2$  s

$$R = (9 + 27) \frac{5}{18} \times 2$$

$$R = 20$$
 m

9. Which of two physical quantities have same dimensions?

- (1) Angular momentum and Planck's constant  
 (2) Torque and moment of inertia  
 (3) Impulse and surface tension  
 (4) Momentum and work done

**Answer (1)**

**Delivering Champions Consistently**

Sol. (1)  $\frac{L}{h} = \frac{mvr}{Et} = \frac{mv^2}{E} \equiv M^0 L^0 T^0$

(2)  $\frac{\bar{L}}{I} = \frac{rF \sin \theta}{mr^2} \equiv M^0 L^0 T^{-2}$

(3)  $\frac{l}{s} = \frac{Ft}{F/l} \equiv LT$

(4)  $\frac{p}{\omega} = \frac{mv}{mv^2} = L^{-1} T$

10. If radius of first Bohr's orbit of H-atom is  $a_0$ . Then find the radius of 2<sup>nd</sup> Bohr's orbit of H-atom.

(1)  $8a_0$  (2)  $4a_0$

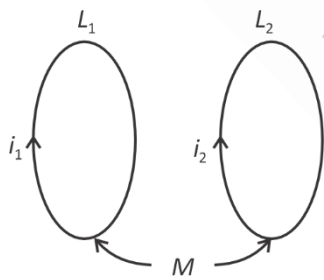
(3)  $2a_0$  (4)  $6\pi a_0$

**Answer (2)**

Sol.  $a = \frac{a_0 n^2}{2}$

So,  $a(n=2) = 4a_0$

11. Two coils having self-inductance  $L_1$  and  $L_2$  are placed closely such that they have a mutual inductance  $M$ . If they carry currents  $i_1$  and  $i_2$  as shown in the figure, then the induced emf in coil 1 is



(1)  $-L_1 \left( \frac{di_1}{dt} \right) + M \left( \frac{di_2}{dt} \right)$  (2)  $-L_1 \left( \frac{di_1}{dt} \right) - M \left( \frac{di_2}{dt} \right)$

(3)  $-L_1 \left( \frac{di_2}{dt} \right) + M \left( \frac{di_1}{dt} \right)$  (4)  $-L_1 \left( \frac{di_2}{dt} \right) - M \left( \frac{di_1}{dt} \right)$

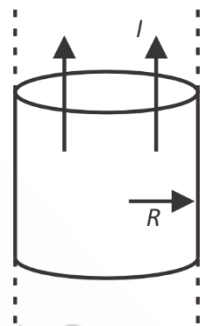
**Answer (2)**

Sol.  $\phi_1 = L_1 i_1 + M i_2$

$$\frac{-d\phi_1}{dt} = -L_1 \left( \frac{di_1}{dt} \right) - M \left( \frac{di_2}{dt} \right)$$

$$\varepsilon_1 = -L_1 \left( \frac{di_1}{dt} \right) - M \left( \frac{di_2}{dt} \right)$$

12. An infinite solid cylindrical wire of radius  $R$  carries a current  $I$  uniformly distributed along its area. The distance from the centre where the magnetic field is equal to  $\frac{\mu_0 I}{4\pi R}$  is



(1)  $\frac{R}{2}$  (2)  $R$

(3)  $4R$  (4)  $0$

**Answer (1)**

Sol.  $B_{\text{inside}} = \frac{\mu_0 r I}{2\pi R^2}$

$$\Rightarrow r = \frac{R}{2}$$

$$B_{\text{outside}} = \frac{\mu_0 I}{2\pi r}$$

$$\Rightarrow r = 2R$$

13. When ball is kept under sea at depth 2.5 km. Find percentage change in its volume. If bulk modulus of water is  $2 \times 10^9$  Pa.

(1) 2% (2) 1.5%

(3) 1.25% (4) 2.75%

**Answer (3)**

**Delivering Champions Consistently**

**JEE (Advanced) 2024**

<b>AIR 25</b> Rishi Shekher Shukla 2 Year Classroom	<b>AIR 67</b> Krishna Sai Shishir 2 Year Classroom	<b>AIR 78</b> Abhishek Jain 2 Year Classroom	<b>AIR 93</b> Hardik Aggarwal 2 Year Classroom	<b>AIR 95</b> Ujjwal Singh 2 Year Classroom	<b>AIR 98</b> Rachit Aggarwal 2 Year Classroom
---	--	--	--	---	--

**JEE (Main) 2024**

<b>Karnataka Topper</b> <b>AIR 1</b> Sarvi Jain 2 Year Classroom	<b>Telangana Topper</b> <b>AIR 15</b> M Sai Divya Teja Reddy 2 Year Classroom	<b>Telangana Topper</b> <b>AIR 19</b> Rishi Shekher Shukla 2 Year Classroom
---	--	--

Sol.  $\beta = \frac{\Delta P}{-\frac{\Delta V}{V}} \Rightarrow \frac{\Delta V}{V} = \frac{\Delta P}{\beta}$

$$= \frac{10^3 \times 10 \times 2500}{2 \times 10^9} \times 100$$

$$= \frac{25}{20}$$

$$= 1.25\%$$

14. Heat given to 0.5 moles of a monoatomic gas at constant pressure is 500 J. Initial temperature of gas was 27°C. Find value of  $\Delta U$  and  $\Delta T$ .

- (1) 300 J, 48°C                      (2) 150 J, 24°C  
 (3) 180 J, 16°C                      (4) 210 J, 18°C

**Answer (1)**

Sol. At constant pressure,

$$\Delta Q = nC_p \Delta T$$

$$500 = \frac{n \cdot 5}{2} R \Delta T$$

$$\Delta U = nC_v \Delta T = \frac{3}{2} nR \Delta T$$

$$= \frac{3}{2} \times 200$$

$$= 300 \text{ J}$$

$$\Delta T = \frac{200 \times 3}{0.5 \times 25}$$

$$\Delta T = 48$$

15. **Assertion:** A negative potential is required to stop the photoelectron.

**Reason :** Speed of electron decreases when a negative potential is applied in a photo cell.

- (1) Assertion is correct but Reason is false  
 (2) Assertion is correct and Reason is also correct  
 (3) Assertion is false but Reason is correct  
 (4) Assertion is false and Reason is also false

**Answer (2)**

Sol. Conceptual

16. If electric dipole of dipole moment  $\vec{P}$  is placed in electric field  $\vec{E}$  with  $\vec{P} \parallel \vec{E}$ . It is rotated slightly (and slowly) and released. Find the time period of oscillation of dipole (moment of inertia of dipole is  $I$ ).

- (1)  $T = 2\pi \sqrt{\frac{I}{PE}}$   
 (2)  $T = \frac{1}{2\pi} \sqrt{\frac{PE}{I}}$   
 (3)  $T = 2\pi \sqrt{\frac{IE}{P}}$   
 (4)  $T = \frac{1}{2\pi} \sqrt{\frac{PI}{E}}$

**Answer (1)**



Sol.  $T_{(R)} = -(\vec{P})(\vec{E}) \sin \theta \approx -|\vec{P}||\vec{E}|\theta$

$$\alpha = -\omega^2 \theta = -\frac{PE}{I} \cdot \theta$$

$$\Rightarrow T = 2\pi \sqrt{\frac{I}{PE}}$$

17. In adiabatic process of closed system, work done by the gas depends explicitly on

- (1) Change in volume  
 (2) Change in pressure  
 (3) Change in temperature  
 (4) Change in number of moles

**Answer (3)**

Sol.  $\Delta \theta = \Delta V + \Delta W \Rightarrow \Delta W = -\Delta V$

$$W = -\frac{\mu R \Delta T}{\gamma - 1} = -\frac{1}{\gamma - 1} (P_2 V_2 - P_1 V_1)$$

Only Change in temperature                      Both on change in pressure and volume

## Delivering Champions Consistently

JEE (Advanced) 2024						JEE (Main) 2024		
 AIR 25 Rishi Shekher Shukla 2 Year Classroom	 AIR 67 Krishna Sai Shishir 2 Year Classroom	 AIR 78 Abhishek Jain 2 Year Classroom	 AIR 93 Hardik Aggarwal 2 Year Classroom	 AIR 95 Ujjwal Singh 2 Year Classroom	 AIR 98 Rachit Aggarwal 2 Year Classroom	 Karnataka Topper 100 PERCENTILE AIR 1 Sarvi Jais 2 Year Classroom	 Telangana Topper 100 PERCENTILE AIR 15 M Sai Divya Tuja Reddy 2 Year Classroom	 Telangana Topper 100 PERCENTILE AIR 19 Rishi Shekher Shukla 2 Year Classroom

18. Match the correct option for List-I and List-II, where symbols have usual meanings.

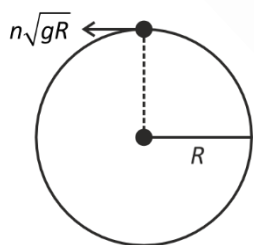
	List-I		List-II
(A)	Electric field inside the spherical shell	(i)	$\frac{\sigma}{2\epsilon_0}$
(B)	Electric field just outside the spherical shell	(ii)	$\frac{\sigma}{\epsilon_0}$
(C)	Electric field inside the charged parallel plate capacitor	(iii)	0
(D)	Electric field of infinite charge sheet	(iv)	$\frac{2\sigma}{\epsilon_0}$

- (1) A-(iii), B-(ii), C-(iv), D-(ii)  
 (2) A-(iii), B-(ii), C-(ii), D-(i)  
 (3) A-(iii), B-(ii), C-(ii), D-(iv)  
 (4) A-(iv), B-(iii), C-(i), D-(ii)

**Answer (2)**

19. A particle is able to complete the vertical circular motion with speed  $n\sqrt{gR}$  at top-most point. Find the ratio of

$$\frac{KE_{(\text{Bottom})}}{KE_{(\text{Top})}}$$



- (1)  $\frac{n^2 + 4}{n}$                       (2)  $\frac{n}{n^2 + 4}$   
 (3)  $\frac{n^2 + 2}{n}$                       (4)  $\frac{n^2 + 4}{n^2}$

**Answer (4)**

**Sol.**  $V_{\tau} = n\sqrt{gR}$

$$V_{\text{Bottom}}^2 = V_{\tau}^2 + 4gR = n^2gR + 4gR$$

$$\frac{KE_{\text{Bottom}}}{KE_{\text{Top}}} = \frac{gR(n^2 + 4)}{gRn^2} = \frac{n^2 + 4}{n^2}$$

20.

**SECTION - B**

**Numerical Value Type Questions:** This section contains 5 Numerical based questions. The answer to each question should be rounded-off to the nearest integer.

21. In a hydraulic lift, the two sides have areas  $A_1 = 25 \text{ cm}^2$  and  $A_2 = 100 \text{ cm}^2$ . If a force of 100 N is applied normally on the area  $A_1$ , then the force on the area  $A_2$  is \_\_\_\_\_ N.

**Answer (400)**

**Sol.** From Pascal's law

$$\frac{F_1}{A_1} = \frac{F_2}{A_2} \text{ or } \frac{100 \text{ N}}{25 \text{ cm}^2} = \frac{F_2}{100 \text{ cm}^2}$$

$$\Rightarrow F_2 = 400 \text{ N}$$

22. Find magnitude of component of torque about origin in z-direction when force  $\vec{F} = \hat{i} - \hat{j} + \hat{k}$  acts at (1, 1, 1).

**Answer (2)**

**Sol.**  $\vec{\tau}_z = \hat{k}(-1, -1) = -2\hat{k}$

$\hat{i}$	$\hat{j}$	$\hat{k}$
1	+1	1
1	-1	1

23.

24.

25.

**Delivering Champions Consistently**