

DATE: 21/06/2026

Test Booklet Code



**60**

**SUSHRUT**

Corporate Office: 3rd Floor, Incuspaze Campus-2, Plot No. 13,  
Sector-18, Udyog Vihar, Gurugram, Haryana - 122015.

## Questions & Answers for

Time : 3 hrs. 15 min.

M.M. : 720

## NEET (UG)-2026 (Re-Examination)

### Important Instructions:

1. The test is of **3 hours 15 minutes** duration and the Test Booklet contains **180** multiple choice questions (Four options with a single correct answer) from **Physics, Chemistry & Biology (Botany and Zoology)**.
2. Each question carries **4 marks**. For each correct response, the candidate will get **4 marks**. For each incorrect response, **1 mark** will be deducted from the total scores. The maximum marks are **720**.
3. Use **Blue / Black Ball Point Pen only** for writing particulars on this page / marking responses on Answer Sheet.
4. Rough work is to be done in the space provided for this purpose in the Test Booklet only.
5. On completion of the test, the candidate **must handover the Answer Sheet (original & office copy) to the Invigilator** before leaving the Room / Hall. The candidates are allowed to take away this Test Booklet with them.
6. The **CODE** for this Booklet is **60**.
7. The candidates should ensure that the Answer Sheet is not folded. Do not make any stray marks on the Answer Sheet. Do not write your Roll No. anywhere else except in the specified space in the Test Booklet/Answer Sheet. Use of white fluid for correction is **NOT** permissible on the Answer Sheet.
8. Each candidate must show on-demand his/her Admit Card to the Invigilator.
9. No candidate, without special permission of the Centre Superintendent or Invigilator, would leave his/her seat.
10. Use of Electronic/Manual Calculator is prohibited.
11. The candidates are governed by all Rules and Regulations of the examination with regard to their conduct in the Examination Hall. All cases of unfair means will be dealt with as per Rules and Regulations of this examination.
12. No part of the **Test Booklet** and **Answer Sheet** shall be detached under any circumstances.
13. The candidates will write the Correct Test Booklet Code as given in the Test Booklet / Answer Sheet in the Attendance Sheet.

**PHYSICS**

1. An ac voltage  $V = 220 \sin(2 \times 10^3 t)$  Volt is applied to a series LCR circuit. Then the current amplitude in this circuit is:

(Given :  $L = 10 \text{ mH}$ ,  $C = 25 \text{ } \mu\text{F}$ ,  $R = 100 \text{ } \Omega$ )

- (1) 11.0 A (2) 22.0 A  
(3) 2.2 A (4) 5.5 A

**Answer (3)**

2. The mean free path of molecules in an ideal gas  $A$  is half that of another ideal gas  $B$ . The diameter of the spherical molecules of gas  $A$  is twice the diameter of the molecules of  $B$ . If number densities of the gases  $A$  and  $B$  are  $n_A$  and  $n_B$ , respectively, the correct option is:

- (1)  $n_A = \frac{1}{4} n_B$  (2)  $n_A = \frac{1}{2} n_B$   
(3)  $n_A = n_B$  (4)  $n_A = 2n_B$

**Answer (2)**

3. A cylindrical cork of uniform density floats in a liquid of density  $\rho_1$ . If the cork is depressed slightly and released, it oscillates harmonically with time period  $T$ . If the same cork floats in another liquid of density  $\rho_2$ , then the similar oscillation has time period  $2T$ . The value of  $\rho_2 / \rho_1$  is:

- (1) 1/2 (2) 1/4  
(3) 4 (4) 2

**Answer (2)**

4. Consider a spring-mass simple harmonic oscillator in one dimension. The mass of the particle is  $m$  kg and the spring constant is  $k \text{ Nm}^{-1}$ . At a given instant, the extension of the spring is  $x$ -meter and the speed of the particle is  $v \text{ ms}^{-1}$ . On the  $x - v$  plane, if the graph of  $v$  as a function of  $x$  is a circle, then the correct option is:

- (1)  $k = m^2$  (2)  $k = \sqrt{m}$   
(3)  $k = \frac{1}{m}$  (4)  $k = m$

**Answer (4)**

5. In an adiabatic expansion, the temperature of one mole of an ideal monatomic gas ( $\gamma = 5/3$ ) decreases from 60 K to 50 K. The work done by the gas in the process is:

(Take the universal gas constant as  $R = 8.3 \text{ J mol}^{-1} \text{ K}^{-1}$ )

- (1) 124.5 J (2) 166 J  
(3) 41.5 J (4) 83 J

**Answer (1)**

6. The following table presents the part of the electromagnetic spectrum and their corresponding major applications.

	Part of the electromagnetic spectrum		Applications
P.	Microwave	I.	For purifying the water
Q.	UV rays	II.	For warming the food
R.	Gamma rays	III.	For AM and FM communication systems
S.	Radio wave	IV.	For treating the Cancer cells

The **correct** option is:

- (1) P-II, Q-I, R-IV, S-III (2) P-II, Q-IV, R-III, S-I  
(3) P-I, Q-II, R-III, S-IV (4) P-I, Q-IV, R-II, S-III

**Answer (1)**





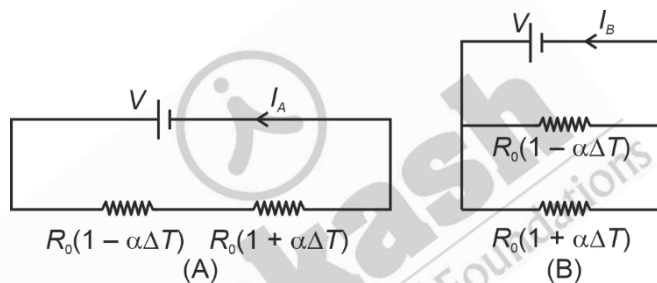
15. Consider a fixed uniformly charged insulating sphere with radius  $R$  and total charge  $+Q$ . A point charge  $-q$  ( $q \ll Q$ ) with mass  $m$  is released from rest at a distance of  $3R$  from the centre of the charged sphere. When the point charge reaches the surface of the sphere, its speed is:

( $\epsilon_0$  is the permittivity of vacuum, neglect gravitational forces).

- (1)  $\sqrt{\frac{Qq}{3\pi\epsilon_0 mR}}$  (2)  $\sqrt{\frac{Qq}{4\pi\epsilon_0 mR}}$   
 (3)  $\sqrt{\frac{3Qq}{4\pi\epsilon_0 mR}}$  (4)  $\sqrt{\frac{2Qq}{3\pi\epsilon_0 mR}}$

**Answer (1)**

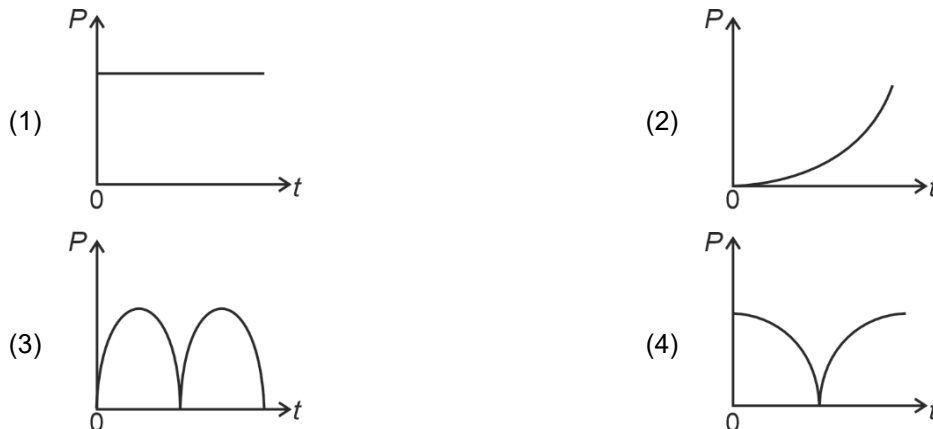
16. Consider two circuits, (A) and (B), each having two resistors. One of them has a positive temperature coefficient of resistance,  $+\alpha$ , while the other one has a negative temperature coefficient,  $-\alpha$ , as shown in the figure. The current through these circuits are denoted by  $I_A$  and  $I_B$ . At initial temperature, the resistance of the two resistors is  $R_0$ . As the temperature is increased, the correct option that describes the variation of current in these circuits is:



- (1)  $I_A$  increases while  $I_B$  decreases (2) Both  $I_A$  and  $I_B$  remain constant  
 (3)  $I_A$  remains constant while  $I_B$  increases (4)  $I_A$  decreases while  $I_B$  increases

**Answer (3)**

17. A conducting loop of finite resistance lies on the  $x - y$  plane. There is a constant magnetic field in the  $z$  direction. The area of the loop varies with time  $t$ , as  $A = A_0(1 + \sin t)$  in appropriate units. The figure that correctly indicates the qualitative behaviour of the power  $P$  dissipated in the loop as a function of time is:



**Answer (4)**

18. A photon and an electron, each of 20 eV energy, move in free space. The ratio of linear momentum of electron  $p_e$  to that of photon  $p_{Ph}$ ,  $\frac{p_e}{p_{Ph}}$  is:

[Take speed of light =  $3 \times 10^8 \text{ ms}^{-1}$ , charge of electron =  $-1.6 \times 10^{-19} \text{ C}$  and mass of electron =  $9 \times 10^{-31} \text{ kg}$ ]

- (1) 225 (2) 275  
(3)  $\frac{2}{450}$  (4)  $\frac{1}{250}$

**Answer (1)**

19. Consider that  $\sigma_s$ ,  $k_B$ ,  $b$  represents Stefan-Boltzmann constant, Boltzmann constant and Wien's displacement law constant, respectively. The dimension of  $\sigma_s k_B^{-1} b$  is

- (1)  $[L^{-1}T^{-1}K^{-3}]$  (2)  $[L^{-1}T^{-1}K^{-4}]$   
(3)  $[L^{-1}T^{-1}K^{-2}]$  (4)  $[L^{-1}K^{-2}]$

**Answer (3)**

20. Two infinitely long parallel conducting wires  $A$  and  $B$  carry currents  $I$  and  $2I$ , respectively, in the same direction. The wire  $A$  has uniform mass per unit length  $\lambda$  and lies on an insulated floor. The wire  $B$  is kept fixed at a height  $h$  above the floor. The minimum magnitude of  $h$  so that the wire  $A$  does not rise from the floor is:

[ $g$  is the acceleration due to gravity and  $\mu_0$  is the permeability of free space.]

- (1)  $\frac{2\mu_0 I^2}{\pi\lambda g}$  (2)  $\frac{4\mu_0 I^2}{\pi\lambda g}$   
(3)  $\frac{\mu_0 I^2}{2\pi\lambda g}$  (4)  $\frac{\mu_0 I^2}{\pi\lambda g}$

**Answer (4)**

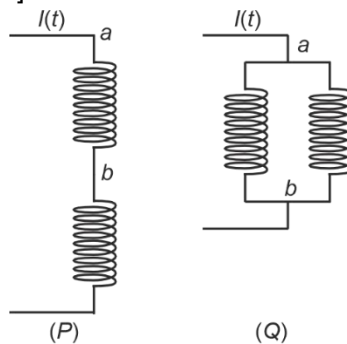
21. Which of the following measurements require 'index correction'?

- (1) Measurement of focal length of lenses using optical bench  
(2) Measurement of speed of sound using resonance tube  
(3) Measurement of resistance of a wire using meter bridge  
(4) Measurement of gravitational acceleration using simple pendulum

**Answer (1)**

22. Two identical inductors are connected in two different configurations  $P$  and  $Q$ , where a time varying current  $I(t)$  is flowing, as shown in the figure. The induced emf between points  $a$  and  $b$  for configuration  $P$  is  $E_P$  and that for configuration  $Q$  is  $E_Q$ . The ratio  $E_P/E_Q$  is:

[Neglect the effect of mutual inductance.]

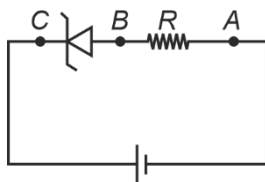


- (1) 1 (2) 2  
(3)  $\frac{1}{4}$  (4)  $\frac{1}{2}$

**Answer (2)**



26. An ideal Zener diode with breakdown voltage of  $-3\text{ V}$  is reverse biased with a negative input voltage  $V_i = -5\text{ V}$ . The magnitude of voltage difference between point  $B$  and  $A$  is:

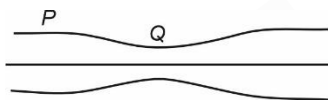


- (1)  $1\text{ V}$  (2)  $0\text{ V}$   
(3)  $3\text{ V}$  (4)  $2\text{ V}$

**Answer (4)**

27. Water flows in a streamline motion through a horizontal pipe of circular cross-section as shown in the figure. The pressure difference of water between  $P$  and  $Q$  is  $15\text{ Nm}^{-2}$ . The area of cross-section at  $P$  and  $Q$  are  $40\text{ cm}^2$  and  $20\text{ cm}^2$ , respectively. The rate of flow of water through the pipe, in  $\text{cm}^3\text{s}^{-1}$ , is:

[Take density of water =  $1000\text{ kg m}^{-3}$ ]



- (1) 300 (2) 400  
(3) 100 (4) 200

**Answer (2)**

28. A particle of mass  $M$  moves along a horizontal  $x$  axis from  $x = 0$  to  $x = L$ . The coefficient of kinetic friction varies as a function of  $x$  as  $\mu_k(x) = \mu_0 - \alpha x$ , where  $\mu_0$ ,  $\alpha$  are constants of appropriate dimensions, so that  $\mu_k(L) = 0$ . The total work done by the frictional force during the motion is  $n\mu_0 MgL$ , where  $g$  is the acceleration due to gravity. The value of  $n$  is:

- (1)  $\frac{1}{3}$  (2)  $\frac{1}{2}$   
(3) 3 (4) 1

**Answer (2)**

29. A ray of light with wavelength  $\lambda$  is incident on three different photoelectric cells namely 1, 2 and 3. The threshold wavelength of these photoelectric cells are  $\lambda_1$ ,  $\lambda_2$ , and  $\lambda_3$ , respectively and the magnitude of stopping potentials of these cells are  $V_1$ ,  $V_2$  and  $V_3$ , respectively. The relation between  $\lambda$  and threshold wavelengths are  $\lambda_1 < \lambda$ ,  $\lambda_2 > \lambda$  and  $\lambda_3 \gg \lambda$ . The correct option is:

- (1)  $V_1 > V_2$ ,  $V_3 = 0$  (2)  $V_1 < V_2$ ,  $V_3 = 0$   
(3)  $V_1 = 0$ ,  $V_2 < V_3$  (4)  $V_1 = 0$ ,  $V_2 > V_3$

**Answer (3)**

30. Consider that an electron is revolving in an excited state of Hydrogen atom with velocity  $\sqrt{25.6} \times 10^5\text{ ms}^{-1}$ . The radius of the orbit is  $x \times 10^{-9}\text{ m}$ . The value of  $x$  is:

[Take the mass of electron to be  $9 \times 10^{-31}\text{ kg}$ , charge of electron =  $-1.6 \times 10^{-19}\text{ C}$  and  $\frac{1}{4\pi\epsilon_0} = 9 \times 10^9\text{ Nm}^2\text{C}^{-2}$ ]

- (1) 2 (2) 1  
(3) 4 (4) 3

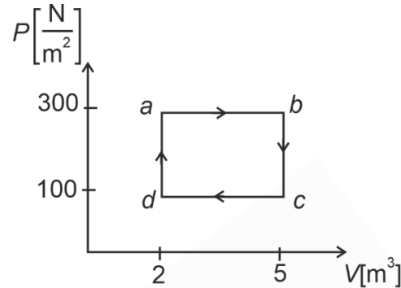
**Answer (2)**

31. A car travels on a circular racetrack of radius 50 m, which is banked at an angle  $\theta$ . If the car travels at a speed  $10 \text{ ms}^{-1}$ , then the wear and tear on its tyres is minimum. Taking the acceleration due to gravity to be  $10 \text{ ms}^{-2}$ , the value of  $\theta$  is:

- (1)  $\tan^{-1}(\sqrt{3}/2)$  (2)  $\tan^{-1}(2\sqrt{3})$   
 (3)  $\tan^{-1}\left(\frac{1}{5}\right)$  (4)  $\tan^{-1}\left(\frac{2}{5}\right)$

**Answer (3)**

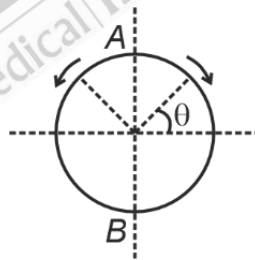
32. One mole of an ideal monatomic gas undergoes a cyclic process as shown in the figure. The total heat supplied to the gas is:



- (1) 600 J (2) 800 J  
 (3) 400 J (4) 500 J

**Answer (1)**

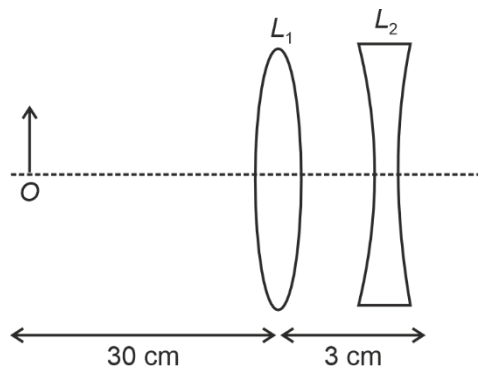
33. A frictionless circular wire of unit radius is fixed on the horizontal plane. Two-point particles of unit mass start moving simultaneously from point  $A\left(\theta = \frac{\pi}{2}\right)$  with identical uniform angular speeds in opposite directions, and meet again at point  $B\left(\theta = -\frac{\pi}{2}\right)$ . During this time, which of the following figures schematically represent the magnitude of the total linear momentum  $P$  of the system, as a function of  $\theta$ ?



- (1) (2)   
 (3) (4)

**Answer (1)**

34. The lens combination as shown in the figure, consists of two lenses,  $L_1$  and  $L_2$ , of the focal lengths  $+10$  cm and  $-10$  cm, respectively. The position of the image formed is:



- (1) 30 cm to the right of the concave lens
- (2) 60 cm to the right of the concave lens
- (3) 20 cm to the left of the concave lens
- (4) 60 cm to the left of the concave lens

**Answer (4)**

35. Two planets  $P_1$  and  $P_2$  with equal mass have radii  $R_1$  and  $R_2$ , respectively, where  $R_2 = \frac{R_1}{2}$ . The escape speeds of  $P_1$  and  $P_2$  are  $v_1$  and  $v_2$ , respectively. Then  $\frac{v_2}{v_1}$  is:

- (1)  $\sqrt{2}$
- (2) 2
- (3)  $\frac{1}{\sqrt{2}}$
- (4) 1

**Answer (1)**

36. An electromagnetic wave travelling in a lossless dielectric medium having a dielectric constant,  $\epsilon_r = 9$ , has the electric field,  $E_x = E_0 \sin(kz - 2\pi \times 10^6 t)$   $\text{Vm}^{-1}$  where  $E_0$  is the amplitude and  $k$  is the wave vector. Among the following options, the **incorrect** choice is

- (1) The magnetic field is given by the relation  $B_y = \frac{B_0}{v} \sin(kz - 2\pi \times 10^6 t)$  where  $v$  is the speed of the electromagnetic wave inside the medium
- (2) The direction of propagation of the electromagnetic wave is along  $+z$
- (3) The speed of the electromagnetic wave inside the medium is  $10^8 \text{ ms}^{-1}$
- (4) The wavelength of the electromagnetic wave inside the medium is 300 m

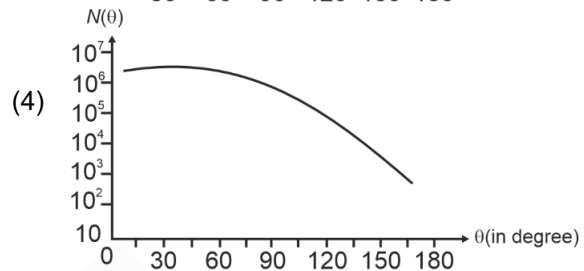
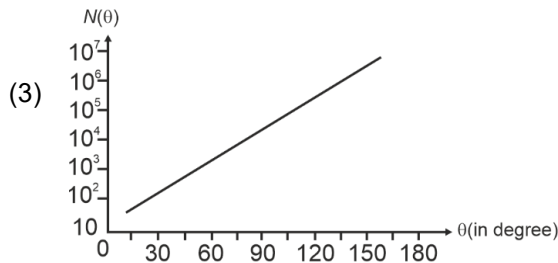
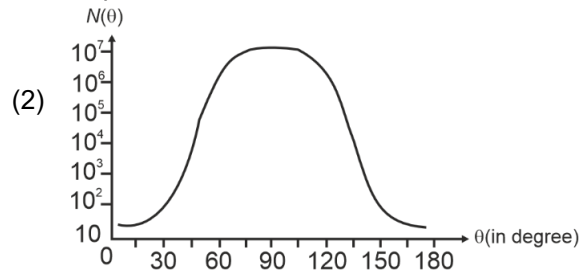
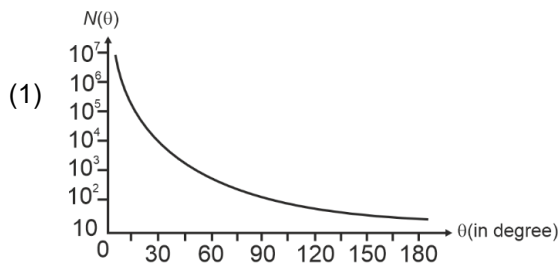
**Answer (4)**

37. Consider a particle moving along a straight line, whose position as a function of time is given by  $s(t) = \alpha t^2 - \beta t + \gamma$ , where  $\alpha = 1 \text{ ms}^{-2}$ ,  $\beta = 6 \text{ ms}^{-1}$  and  $\gamma = 5 \text{ m}$ . The average speed of the particle, in  $\text{ms}^{-1}$  from  $t = 0$  to  $t = 6 \text{ s}$  is:

- (1) 3
- (2) 0
- (3) 12
- (4) 6

**Answer (1)**

38. In Geiger-Marsden experiment, the number of scattered  $\alpha$ -particles  $N(\theta)$  is plotted as a function of scattering angle  $\theta$ . Which of the following options represents the correct plot?



**Answer (1)**

39. For sound waves, if the number of nodes for the 5<sup>th</sup> harmonic of an open-ended pipe is  $n$  and that for the 9<sup>th</sup> harmonic of the same pipe with one of its ends closed is  $m$ , the ratio  $\frac{n}{m}$  is

(1) 1

(2)  $\frac{3}{5}$

(3)  $\frac{5}{9}$

(4)  $\frac{9}{5}$

**Answer (1)**

40. Consider a long solenoid of length  $l$  and radius  $r$ . If  $n$  is the number of turns per unit length and  $\mu_0$  is the permeability of free space, the inductance of the solenoid is :

(1)  $(\mu_0/2\pi)n^2r^2l$

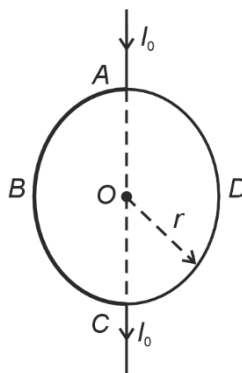
(2)  $2\mu_0\pi n^2r^2l$

(3)  $\mu_0\pi n^2r^2l$

(4)  $\mu_0n^2r^2l$

**Answer (3)**

41. A current  $I_0$  flows through a metallic circular loop of radius  $r$  as shown in the figure. Resistance of the segment  $ABC$  is half that of  $ADC$ . Magnitude of magnetic field at the centre  $O$  of the loop is :



(1)  $\frac{\mu_0 I_0}{2r}$

(2)  $\frac{\mu_0 I_0}{2\pi r}$

(3)  $\frac{\mu_0 I_0}{12r}$

(4)  $\frac{\mu_0 I_0}{4r}$

**Answer (3)**

42. The temperature of a metallic sphere of radius  $R$  is increased by a small amount  $\Delta T$ . If the linear coefficient of thermal expansion of the metal is  $\alpha$ , the approximate increase in the volume of the sphere is:

- (1)  $4\pi R^3 \alpha \Delta T$  (2)  $6\pi R^3 \alpha \Delta T$   
 (3)  $2\pi R^3 \alpha \Delta T$  (4)  $3\pi R^3 \alpha \Delta T$

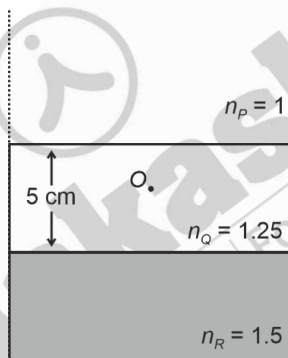
**Answer (1)**

43. One main scale division of a Vernier calliper is equal to 1 mm and the number of divisions on the Vernier scale is 10. When both the jaws touch each other, the Vernier scale shifts to the left of zero of the main scale in such a way that 4<sup>th</sup> Vernier division coincides with a division of the main scale. If this Vernier calliper measures the length of the wire to be 1 cm, the actual length of the wire is :

- (1) 1.00 cm (2) 1.04 cm  
 (3) 0.60 cm (4) 0.96 cm

**Answer (No option is correct)**

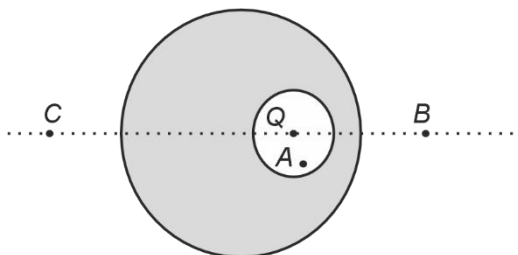
44. Consider three media  $P$ ,  $Q$  and  $R$  with refractive indices 1, 1.25, and 1.5 respectively. The medium  $Q$  having a thickness of 5 cm is placed between extended media  $P$  and  $R$  as shown in the figure. An object  $O$  is placed at the centre of medium  $Q$ . If viewed from medium  $P$  near the normal direction, the apparent depth of  $O$  is  $h_1$ . For similar observation from medium  $R$ , the apparent depth is  $h_2$ . The value of  $|h_1 - h_2|$ , in cm, is:



- (1) 2 (2) 3  
 (3) 0 (4) 1

**Answer (4)**

45. A point charge  $Q$  is placed inside a cavity within a solid isolated conducting sphere. Consider points  $A$ ,  $B$  and  $C$  as shown in the figure, where the magnitudes of the electric fields are  $E_A$ ,  $E_B$ ,  $E_C$ , respectively. The points  $B$  and  $C$  are at the same distance from the center of the solid sphere. The correct option is :



- (1)  $E_A = 0, E_B > E_C$  (2)  $E_A \neq 0, E_B < E_C$   
 (3)  $E_A = 0, E_B = E_C$  (4)  $E_A \neq 0, E_B = E_C$

**Answer (4)**

**CHEMISTRY**

46. The lanthanide ion having four unpaired electrons is  
(Given : Atomic numbers of Ce = 58, Nd = 60, Tb = 65 and Ho = 67)
- (1)  $Tb^{3+}$
  - (2)  $Ho^{3+}$
  - (3)  $Nd^{3+}$
  - (4)  $Ce^{3+}$

**Answer (2)**

47. The standard electrode potential ( $E^\circ$ ) for the half-cell reaction  $Fe^{3+} + e^- \rightarrow Fe^{2+}$  at 298 K is  
(Given :  $E^\circ(Fe^{3+}/Fe) = -0.04$  V and  $E^\circ(Fe^{2+}/Fe) = -0.44$  V at 298 K)
- (1)  $-0.48$  V
  - (2)  $+0.92$  V
  - (3)  $+0.40$  V
  - (4)  $+0.76$  V

**Answer (4)**

48. Given below are two statements :

**Statement-I** : Heating NaCl with concentrated  $H_2SO_4$  and  $MnO_2$  results in oxidation of Mn.

**Statement-II** : Heating NaI with concentrated  $H_2SO_4$  and  $MnO_2$  results in reduction of Mn.

In light of the above statements, choose the **most appropriate** answer from the options given below.

- (1) **Statement-I** is correct but **Statement-II** is incorrect
- (2) **Statement-I** is incorrect but **Statement-II** is correct
- (3) Both **Statement-I** and **Statement-II** are correct
- (4) Both **Statement-I** and **Statement-II** are incorrect

**Answer (2)**

49. The complex which has *facial* and *meridional* isomers is  
(Given : py = pyridine and en =  $H_2N - CH_2 - CH_2 - NH_2$ )
- (1)  $[Co(NH_3)_4(H_2O)_2]^{3+}$
  - (2)  $[Ni(en)_2(H_2O)_2]^{2+}$
  - (3)  $[Cr(py)_3(Cl)_3]$
  - (4)  $[Cr(H_2O)_6]^{3+}$

**Answer (3)**

50. Among the following, the compound having conjugated double bonds is
- (1) hepta-1,5-diene
  - (2) hepta-1,6-diene
  - (3) hepta-1,3-diene
  - (4) hepta-1,4-diene

**Answer (3)**

51. Match the species in **List-I** with their geometry in **List-II**.

	List-I		List-II
A.	$\text{PCl}_5$	I.	Tetrahedral
B.	$\text{BrF}_5$	II.	Square Planar
C.	$\text{BF}_4^-$	III.	Trigonal bipyramidal
D.	$[\text{Ni}(\text{CN})_4]^{2-}$	IV.	Square pyramidal

Choose the **correct** answer from the options given below:

- (1) A-III, B-I, C-II, D-IV
- (2) A-III, B-II, C-I, D-IV
- (3) A-IV, B-III, C-I, D-II
- (4) A-III, B-IV, C-I, D-II

**Answer (4)**

52. The amino acid that gives a red-blood colour on treating its sodium fusion extract with sodium nitroprusside is
- (1) methionine
  - (2) serine
  - (3) leucine
  - (4) threonine

**Answer (1)**

53. A protein undergoes reversible thermal denaturation from its initial state **N** to denatured state **D** according to  $\text{N} \rightleftharpoons \text{D}$ . At  $60^\circ\text{C}$ , the concentrations of both **N** and **D** are equal at equilibrium, and the standard enthalpy change of denaturation is  $666 \text{ kJ mol}^{-1}$ . The standard entropy change ( $\Delta S^\circ$  in  $\text{kJ K}^{-1} \text{ mol}^{-1}$ ) of the protein upon denaturation at  $60^\circ\text{C}$  is closest to
- (1) 333.0
  - (2) 11.1
  - (3) 2.0
  - (4) 2000.0

**Answer (3)**

54.  $2A \xrightarrow{k} B$  is a zero-order reaction, where  $k = 1.0 \text{ mol L}^{-1} \text{ min}^{-1}$ . If the initial concentration of A is 2 M, then the time taken to complete 75% of the reaction will be
- (1) 1.0 min
  - (2) 2.0 min
  - (3) 1.5 min
  - (4) 0.75 min

**Answer (4)**

55. Given below are two statements:

**Statement-I** :  $[\text{Fe}(\text{ox})_3]^{3-}$  is chiral.

**Statement-II** : *trans* -  $[\text{Cr}(\text{H}_2\text{O})_2(\text{ox})_2]^-$  is chiral.

(Given :  $\text{oxH}_2 = \text{HOOC} - \text{COOH}$ )

In light of the above statements, choose the **most appropriate** answer from the options given below:

- (1) **Statement-I** is correct but **Statement-II** is incorrect
- (2) **Statement-I** is incorrect but **Statement-II** is correct
- (3) Both **Statement-I** and **Statement-II** are correct
- (4) Both **Statement-I** and **Statement-II** are incorrect

**Answer (1)**

56. Given below are two statements: One is labelled as **Assertion A** and the other is labelled as **Reason R**.

**Assertion A**: Generally, 3d transition metals have high melting points.

**Reason R**: Involvement of 3d-electrons in addition to 4s-electrons in the interatomic metallic bonding.

In light of the above statements, choose the **most appropriate** answer from the options given below:

- (1) **A** is correct but **R** is not correct.
- (2) **A** is not correct but **R** is correct
- (3) Both **A** and **R** are correct and **R** is the correct explanation of **A**
- (4) Both **A** and **R** are correct and **R** is **NOT** the correct explanation of **A**

**Answer (3)**

57. Among the species given below, the spin-only magnetic moment is highest for

(Given: Atomic number of Ti = 22, Mn = 25, Fe = 26 and Co = 27)

- (1)  $[\text{Co}(\text{NH}_3)_6]^{3+}$
- (2)  $[\text{Ti}(\text{H}_2\text{O})_6]^{3+}$
- (3)  $[\text{Mn}(\text{CN})_6]^{3-}$
- (4)  $[\text{Fe}(\text{CN})_6]^{3-}$

**Answer (3)**

58. According to crystal field theory, the correct order of ligands with respect to their decreasing order of field strength is
- (1)  $\text{Cl}^- > \text{H}_2\text{O} > \text{NH}_3 > \text{CO}$
  - (2)  $\text{Cl}^- > \text{NH}_3 > \text{H}_2\text{O} > \text{CO}$
  - (3)  $\text{CO} > \text{NH}_3 > \text{H}_2\text{O} > \text{Cl}^-$
  - (4)  $\text{CO} > \text{H}_2\text{O} > \text{NH}_3 > \text{Cl}^-$

**Answer (3)**

59. In potash alum, the ratio of  $\text{K}^+$  and  $\text{SO}_4^{2-}$  ions is

- (1) 2 : 3
- (2) 3 : 2
- (3) 1 : 2
- (4) 2 : 1

**Answer (3)**

60. Given below are two statements: One is labelled as **Assertion A** and the other is labelled as **Reason R**.

**Assertion A:** The first ionization enthalpy of O is lower than that of N and F.

**Reason R:** The loss of an electron from O leads to stable half-filled *p* orbital.

In light of the above statements, choose the **most appropriate** answer from the options given below:

- (1) **A** is correct but **R** is not correct.
- (2) **A** is not correct but **R** is correct
- (3) Both **A** and **R** are correct and **R** is the correct explanation of **A**
- (4) Both **A** and **R** are correct and **R** is **NOT** the correct explanation of **A**

**Answer (3)**

61. Given below are two statements:

**Statement-I :** Oxidation of *p*-nitrotoluene with acidic  $\text{KMnO}_4$  gives an acid that is stronger than benzoic acid.

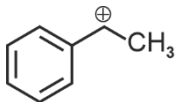
**Statement-II :** Reduction of *p*-nitrotoluene with  $\text{Sn}/\text{HCl}$  followed by neutralization gives an amine that is more basic than aniline.

In light of the above statements, choose the **most appropriate** answer from the options given below.

- (1) **Statement-I** is correct but **Statement-II** is incorrect
- (2) **Statement-I** is incorrect but **Statement-II** is correct
- (3) Both **Statement-I** and **Statement-II** are correct
- (4) Both **Statement-I** and **Statement-II** are incorrect

**Answer (3)**

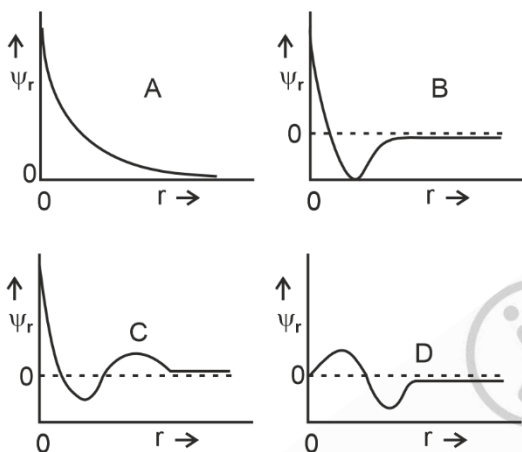
62. The following carbocation is stabilized by the interaction of the empty  $p$  orbital with



- (1) empty  $\sigma^*$  and filled  $\pi$  orbitals
- (2) empty  $\sigma^*$  and empty  $\pi^*$  orbitals
- (3) filled  $\sigma$  and filled  $\pi$  orbitals
- (4) empty  $\sigma$  and empty  $\pi^*$  orbitals

**Answer (3)**

63. Consider the following schematic plots of orbital wavefunction ( $\psi_r$ ) against distance ( $r$ ) from the nucleus.



The figure representing two radial nodes in the orbital is

- (1) C
- (2) D
- (3) A
- (4) B

**Answer (1)**

64. The correct order of solubility of the given salts in water at 298 K is

Salt	$K_{sp}$ at 298 K
AgBr	$5.0 \times 10^{-13}$
Zn(OH) <sub>2</sub>	$1.0 \times 10^{-15}$
Hg <sub>2</sub> Cl <sub>2</sub>	$1.3 \times 10^{-18}$

- (1) Hg<sub>2</sub>Cl<sub>2</sub> > AgBr > Zn(OH)<sub>2</sub>
- (2) Zn(OH)<sub>2</sub> > AgBr > Hg<sub>2</sub>Cl<sub>2</sub>
- (3) Hg<sub>2</sub>Cl<sub>2</sub> > Zn(OH)<sub>2</sub> > AgBr
- (4) AgBr > Zn(OH)<sub>2</sub> > Hg<sub>2</sub>Cl<sub>2</sub>

**Answer (2)**

65. A 1 : 3 electrolyte in an aqueous solution is

- (1)  $[\text{Co}(\text{NH}_3)_6]\text{Cl}_3$  (2)  $[\text{Co}(\text{NH}_3)_3(\text{NO}_2)_3]$   
 (3)  $[\text{CoCl}_2(\text{NH}_3)_4]\text{Cl}$  (4)  $[\text{CoCl}(\text{NH}_3)_5]\text{Cl}_2$

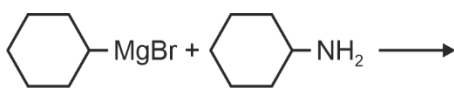
**Answer (1)**

66. The correct statement about peptides and proteins is

- (1) In  $\beta$ -pleated sheet structures, peptide chains are held together by intermolecular hydrogen bonds  
 (2) In  $\alpha$ -helices, the polypeptide chain is twisted into a left-handed screw (helix) through intramolecular hydrogen bonds  
 (3) Tertiary structure of proteins has two or more polypeptide subunits  
 (4) Only the proteins having a quaternary structure are biologically active

**Answer (1)**

67. One of the products formed in the following reaction is



- (1)  (2)   
 (3)  (4) 

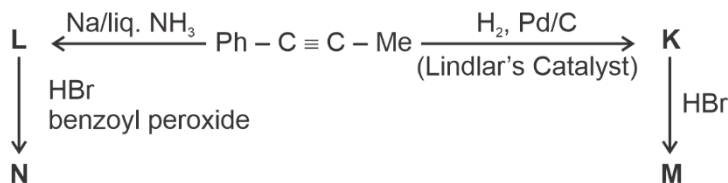
**Answer (2)**

68. In an acidic medium, 10 mL of 0.25 M oxalic acid is titrated with  $\text{KMnO}_4$  solution. If the volume of  $\text{KMnO}_4$  solution required to reach end point is 10 mL, the strength of the  $\text{KMnO}_4$  solution is

- (1) 0.25 M (2) 0.15 M  
 (3) 0.10 M (4) 0.20 M

**Answer (3)**

69. Consider the following reaction sequences and choose the correct option.



- (1) **M** and **N** are geometrical isomers (2) **M** and **N** are stereoisomers  
 (3) **K** and **L** are geometrical isomers (4) **K** and **L** are enantiomers

**Answer (3)**

70. Arrange the following compounds in the increasing order of polarity

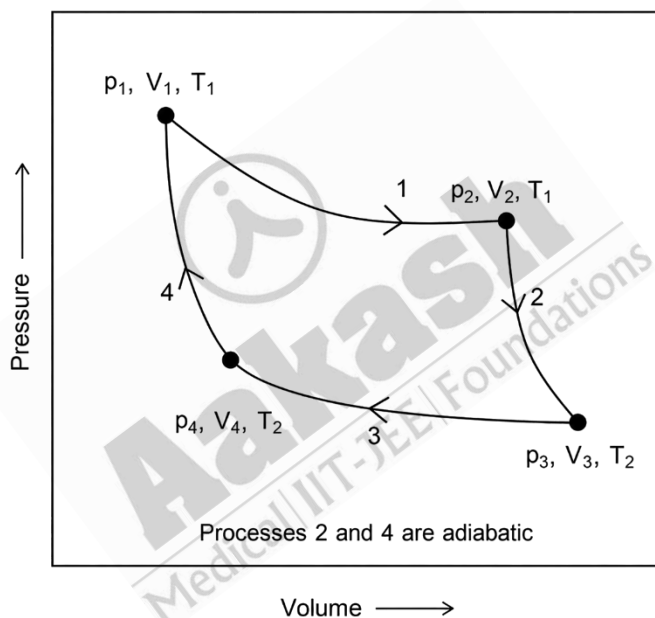
- A.  $\text{CH}_3\text{CH}_2\text{OCH}_2\text{CH}_3$
- B.  $\text{CH}_3\text{CH}_2\text{OH}$
- C.  $\text{CH}_3\text{COCH}_3$
- D.  $\text{CH}_3\text{COOH}$

Choose the correct answer from the options given below.

- (1)  $C < A < B < D$
- (2)  $A < C < B < D$
- (3)  $A < B < C < D$
- (4)  $C < A < D < B$

**Answer (2)**

71. Consider the reversible processes for 1.0 mol of an ideal gas as shown in the figure.



$w_1, w_2, w_3$  and  $w_4$  represent work done (in calories) in the processes 1, 2, 3 and 4, respectively;  $\Delta U_2$  and  $\Delta U_4$  are changes in the internal energy for the processes 2 and 4, respectively.

[use  $R = 2 \text{ cal K}^{-1} \text{ mol}^{-1}$ ]

The correct option is

- (1)  $w_1 + w_2 = 2T_1 \ln \frac{V_2}{V_1}$
- (2)  $w_1 + w_2 + w_3 + w_4 = 0$
- (3)  $w_1 + w_3 = -2T_1 \ln \frac{V_2}{V_1} - 2T_2 \ln \frac{V_4}{V_3}$
- (4)  $w_2 + w_4 = \Delta U_2 - \Delta U_4$

**Answer (3)**

72. The green paramagnetic species formed by heating  $\text{KMnO}_4$  at 513 K is

- (1)  $\text{MnO}$  (2)  $\text{KO}_2$   
(3)  $\text{K}_2\text{MnO}_4$  (4)  $\text{Mn}_3\text{O}_4$

**Answer (3)**

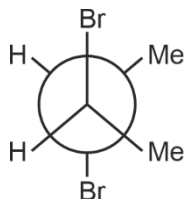
73. The numbers 17.0145 and 21.0235 were rounded to three figures after the decimal point. The resulting numbers, respectively, are

- (1) 17.014 and 21.024 (2) 17.015 and 21.024  
(3) 17.014 and 21.023 (4) 17.015 and 21.023

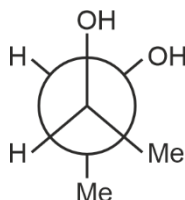
**Answer (1)**

74. Given below are two statements :

**Statement I** : *trans*-But-2-ene upon treatment with  $\text{Br}_2$  in  $\text{CCl}_4$  gives the following product.



**Statement II** : *cis*-But-2-ene upon treatment with alkaline  $\text{KMnO}_4$  gives the following product.

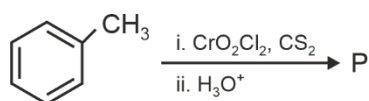


In the light of the above statements, choose the **most appropriate** answer from the options given below.

- (1) **Statement I** is correct but **Statement II** is incorrect  
(2) **Statement I** is incorrect but **Statement II** is correct  
(3) Both **Statement I** and **Statement II** are correct  
(4) Both **Statement I** and **Statement II** are incorrect

**Answer (2)**

75. Consider the following reaction, and choose the correct option.



- (1) On treatment with bromine water, compound **P** gives a white precipitate  
(2) Compound **P** is obtained by the hydrogenation of benzoyl chloride with Pd on  $\text{BaSO}_4$   
(3) On treating compound **P** with saturated  $\text{NaHCO}_3$  solution, brisk effervescence is observed  
(4) Compound **P** can be prepared by treating benzene with anhydrous  $\text{AlCl}_3$  and  $\text{CH}_3\text{COCl}$

**Answer (2)**

76. Match the vitamins in **List I** with their sources in **List II**

	List I		List II
A.	vitamin A	I.	meat
B.	vitamin B <sub>12</sub>	II.	sunflower oil
C.	vitamin E	III.	green leafy vegetables
D.	vitamin K	IV.	carrots

Choose the correct answer from the options given below.

- (1) A-IV, B-II, C-I, D-III
- (2) A-III, B-I, C-IV, D-II
- (3) A-II, B-III, C-IV, D-I
- (4) A-IV, B-I, C-II, D-III

**Answer (4)**

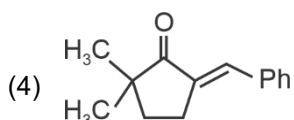
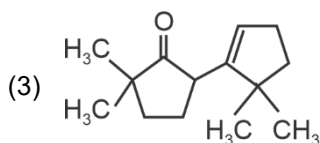
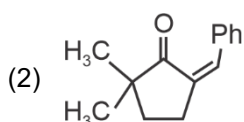
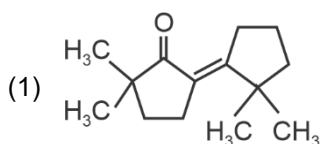
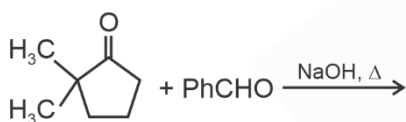
77. The amount of carbon dioxide evolved upon complete combustion of 116 g of n-butane is

(Given: atomic mass in amu H = 1, C = 12 and O = 16)

- (1) 176 g
- (2) 362 g
- (3) 352 g
- (4) 322 g

**Answer (3)**

78. The compound that **CANNOT** be obtained from the aldol condensation reaction shown below, is



**Answer (3)**

79. The correct statement is
- (1) Magnesium has a maximum covalency of four.
  - (2) Aluminium has five valence orbitals.
  - (3) Boron has a maximum covalency of four.
  - (4) Beryllium has three valence orbitals.

**Answer (3)**

80. The formula of tetraammineaquachloridocobalt(III) chloride is
- (1)  $[\text{Co}(\text{NH}_3)_4(\text{H}_2\text{O})\text{Cl}]\text{Cl}$
  - (2)  $[\text{Co}(\text{NH}_3)_4(\text{H}_2\text{O})\text{Cl}]\text{Cl}_2$
  - (3)  $[\text{Co}(\text{NH}_3)_4\text{Cl}_2] \times \text{H}_2\text{O}$
  - (4)  $[\text{Co}(\text{NH}_3)_4]\text{Cl}_3 \times \text{H}_2\text{O}$

**Answer (2)**

81. **Assertion A:** For an ideal solution formed by mixing liquids **P** and **Q**,  $\Delta_{\text{mix}} H = 0$  and  $\Delta_{\text{mix}} V = 0$

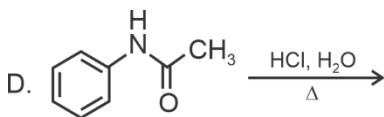
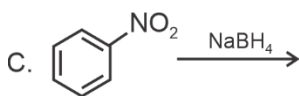
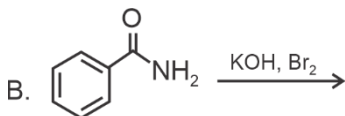
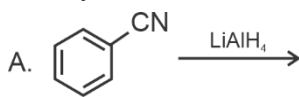
**Reason R:** No interactions occur between **P** and **Q**

In the light of the above statements, choose the **most appropriate** answer from the options given below.

- (1) **A** is correct but **R** is not correct
- (2) **A** is not correct but **R** is correct
- (3) Both **A** and **R** are correct and **R** is the correct explanation of **A**
- (4) Both **A** and **R** are correct but **R** is **NOT** the correct explanation of **A**

**Answer (1)**

82. Identify the reactions which give aniline as the major product.



Choose the correct answer from the options given below.

- (1) A and C only
- (2) C and D only
- (3) A and B only
- (4) B and D only

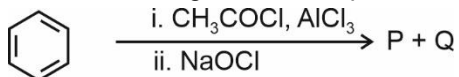
**Answer (4)**

83. The correct decreasing order of oxidation state of the underlined atom in each molecule is

- (1)  $\underline{\text{Pb}}\text{O}_2 > \underline{\text{N}}_2\text{O}_3 > \underline{\text{S}}\text{O}_3$
- (2)  $\underline{\text{P}}_4\text{O}_6 > \underline{\text{Cl}}_2\text{O}_7 > \underline{\text{Al}}\text{H}_3$
- (3)  $\underline{\text{P}}_4\text{O}_{10} > \underline{\text{S}}\text{O}_3 > \text{H}_2\underline{\text{O}}$
- (4)  $\underline{\text{N}}_2\text{O}_5 > \underline{\text{Al}}_2\text{O}_3 > \text{H}_2\underline{\text{S}}$

**Answer (4)**

84. For the following reaction sequence, choose the correct option



- (1) If **P** gives a carboxylic acid on acidification, **Q** gives a poisonous gas on exposure to air and light
- (2) Both **P** and **Q** are carbonyl compounds
- (3) If **P** is the sodium salt of a carboxylic acid, **Q** is a primary alcohol
- (4) **P** and **Q** are aromatic compounds

**Answer (1)**

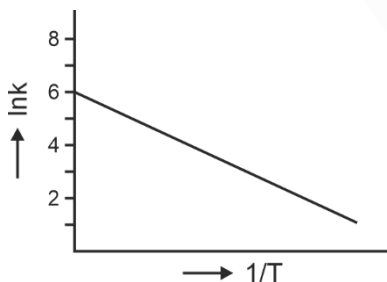
85. Two moles of an ideal gas undergo free expansion from 10 L to 100 L at 300 K. The values of  $\Delta S_{\text{system}}$  and  $\Delta S_{\text{surroundings}}$  are

(R is universal gas constant)

- (1)  $\Delta S_{\text{system}} = 0$ ;  $\Delta S_{\text{surroundings}} = 4.606 R$
- (2)  $\Delta S_{\text{system}} = 4.606 R$ ;  $\Delta S_{\text{surroundings}} = 0$
- (3)  $\Delta S_{\text{system}} = 0$ ;  $\Delta S_{\text{surroundings}} = 0$
- (4)  $\Delta S_{\text{system}} = 4.606 R$ ;  $\Delta S_{\text{surroundings}} = -4.606 R$

**Answer (2)**

86. For an elementary chemical reaction, the Arrhenius plot is given below.



If the energy of activation is  $6.64 \text{ kJ mol}^{-1}$  and  $R = 8.3 \text{ J K}^{-1} \text{ mol}^{-1}$ , the temperature at which the rate constant becomes  $e^2 \text{ min}^{-1}$ , is

- (1) 200 K
- (2) 250 K
- (3) 125 K
- (4) 150 K

**Answer (1)**

87. Consider the following statements about the solutions formed by mixing two liquids.
- An ideal solution thus formed obeys Raoult's law throughout the composition range.
  - Mixture of chloroform and acetone shows negative deviation from Raoult's law.
  - Mixture of aniline and phenol shows positive deviation from Raoult's law.

- A only
- A and C only
- A and B only
- B and C only

**Answer (3)**

88. The highest occupied molecular orbital for  $\text{Ne}_2$  is

- $\pi_{2p}^*$
- $\sigma_{2p}^*$
- $\pi_{2p}$
- $\sigma_{2p}$

**Answer (2)**

89. For a salt **XY**, which is a strong electrolyte, the plot of  $\Lambda_m$  versus  $\sqrt{c}$  has a slope of  $-90.0 \text{ S cm}^2 \text{ mol}^{-3/2} \text{ L}^{1/2}$  at 298 K. At 0.01 M concentration of **XY**, the value of  $\Lambda_m$  is  $145.0 \text{ S cm}^2 \text{ mol}^{-1}$ . The limiting molar conductivity of  $\text{Y}^-$  ion ( $\lambda_{\text{Y}^-}^0$ , in  $\text{S cm}^2 \text{ mol}^{-1}$ ) at 298 K will be

(Given :  $\lambda_{\text{X}^+}^0 = 74.0 \text{ S cm}^2 \text{ mol}^{-1}$ )

- 90.0
- 76.0
- 80.0
- 100.0

**Answer (3)**

90. Among the following options, the correct trend in the electron gain enthalpy is

- $\text{Cl} > \text{F} > \text{Br} > \text{I}$
- $\text{I} > \text{Br} > \text{Cl} > \text{F}$
- $\text{F} > \text{Cl} > \text{Br} > \text{I}$
- $\text{Br} > \text{Cl} > \text{F} > \text{I}$

**Answer (1)**

**BIOLOGY**

91. Given below are two statements :

**Statement I** : Chromosomes are fully condensed at the end of prophase I.

**Statement II** : Meiosis I resembles mitosis.

In the light of the above statements, choose the **most appropriate** answer from the options given below :

- (1) **Statement I** is correct, but **Statement II** is false
- (2) **Statement I** is incorrect, but **Statement II** is true
- (3) Both **Statement I** and **Statement II** are true
- (4) Both **Statement I** and **Statement II** are false

**Answer (1)**

92. Which of the following is **not** a characteristic of chordates?

- (1) Absence of gills
- (2) Presence of post anal part (tail)
- (3) Presence of notochord
- (4) Central nervous system is dorsal

**Answer (1)**

93. Phyllotaxy is the pattern of arrangement of \_\_\_\_\_.

- (1) fruits
- (2) sepals
- (3) leaves
- (4) flowers

**Answer (3)**

94. Which one of the following statements is **incorrect**?

- (1) Glucagon stimulates glycogenolysis
- (2)  $\beta$ -cells of pancreas secrete insulin
- (3)  $\alpha$ -cells of pancreas secrete glucagon
- (4)  $\alpha$ -cells of pancreas secrete insulin

**Answer (4)**

95. The plastid that stores xanthophyll is known as \_\_\_\_\_.

- (1) aleuroplast
- (2) amyloplast
- (3) chloroplast
- (4) chromoplast

**Answer (4)**

96. Match **List-I** with **List-II**.

	<b>List-I</b>		<b>List-II</b>
A.	Fusion of protoplasts between gametes	I.	Meiosis
B.	Fusion of two nuclei	II.	Plasmogamy
C.	Generation of haploid spores	III.	Karyogamy

Choose the **correct** answer from the options given below :

- (1) A-III, B-II, C-I
- (2) A-I, B-III, C-II
- (3) A-II, B-III, C-I
- (4) A-II, B-I, C-III

**Answer (3)**

97. Given below are two statements:

**Statement I:** In gymnosperms, the male and female gametophytes remain within the sporangia.

**Statement II:** In gymnosperms, seeds are not covered.

In the light of the above statements, choose the **most appropriate** answer from the options given below:

- (1) **Statement I** is correct but **Statement II** is incorrect
- (2) **Statement I** is incorrect but **Statement II** is correct
- (3) Both **Statement I** and **Statement II** are correct
- (4) Both **Statement I** and **Statement II** are incorrect

**Answer (3)**

98. In water, frogs respire using \_\_\_\_\_.

- (1) lungs
- (2) trachea
- (3) skin
- (4) buccal cavity

**Answer (3)**

99. Mad cow disease is caused by \_\_\_\_\_.

- (1) *Aspergillus sp.*
- (2) *Mycoplasma sp.*
- (3) prions
- (4) viroids

**Answer (3)**

100. Which of the following statements regarding photorespiration are correct?

- (a) Do not occur in C<sub>3</sub> plants
- (b) CO<sub>2</sub> is consumed and O<sub>2</sub> is generated
- (c) Phosphoglycolate is formed
- (d) No synthesis of ATP and NADPH

Choose the **correct** answer from the options given below:

- (1) (b) and (d) only
- (2) (a) and (b) only
- (3) (a) and (d) only
- (4) (c) and (d) only

**Answer (4)**

101. Select the correct sequence of experiments that led to a gradual understanding of photosynthesis in green plants.

- (1) Release of oxygen → production of glucose → absorption spectra of chlorophyll a and b → role of air
- (2) Production of glucose → role of air → release of oxygen → absorption spectra of chlorophyll a and b
- (3) Absorption spectra of chlorophyll a and b → production of glucose → release of oxygen → role of air
- (4) Role of air → release of oxygen → production of glucose → absorption spectra of chlorophyll a and b

**Answer (4)**

102. How many turns of Calvin cycle are required for the formation of three molecules of glucose?

- (1) 1
- (2) 18
- (3) 6
- (4) 3

**Answer (2)**

103. Mitochondrial inner membrane encloses \_\_\_\_\_.

- (1) mucus
- (2) aqueous humor
- (3) matrix
- (4) cytosol

**Answer (3)**

104. Which of the following statements is **incorrect**?

- (1) Fibrin is produced from fibrinogen
- (2) Fibrinogen is produced from fibrin
- (3) Blood coagulates in response to an injury
- (4) Blood clot consists of fibrins

**Answer (2)**

105. Sphenopsida class belongs to \_\_\_\_\_.

- (1) gymnosperms
- (2) pteridophytes
- (3) bryophytes
- (4) angiosperms

**Answer (2)**



110. In frogs, the number of pairs of cranial nerves arising from the brain are \_\_\_\_\_.

- (1) 10 (2) 12  
(3) 6 (4) 9

**Answer (1)**

111. Cell theory was formulated by \_\_\_\_\_.

- (1) Singer and Nicolson  
(2) Antonie Von Leeuwenhoek  
(3) Schleiden and Schwann  
(4) Robert Brown

**Answer (3)**

112. Which of the following statements related to pituitary gland are **correct**?

- (a) It is divided anatomically into adenohypophysis and neurohypophysis  
(b) It secretes follicle stimulating hormone  
(c) It secretes melanocyte stimulating hormone  
(d) It does not secrete prolactin

Choose the **correct** answer from the options given below :

- (1) (c) and (d) only  
(2) (b) and (c) only  
(3) (a) and (b) only  
(4) (a), (b) and (c) only

**Answer (4)**

113. Which of the following is **not** a prokaryote?

- (1) Mycoplasma  
(2) Fungi  
(3) Bacteria  
(4) Blue green algae

**Answer (2)**

114. Length of the stem at time 0 is 20 cm. The arithmetic growth rate is 30 cm per day. What is the length of the stem at the end of the 7<sup>th</sup> day?

- (1) 230 cm  
(2) 460 cm  
(3) 50 cm  
(4) 170 cm

**Answer (1)**

115. Which of the following is **not** a part of human central neural system?

- (1) Pia mater
- (2) Pericardium
- (3) Arachnoid
- (4) Dura mater

**Answer (2)**

116. Which of the following plant growth regulators promotes internode elongation prior to flowering in cabbage?

- (1) Indole butyric acid
- (2) Ethephon
- (3) Abscisic acid
- (4) Gibberellin

**Answer (4)**

117. Match **List-I** with **List-II**.

	<b>List-I</b>		<b>List-II</b>
A.	Marginal placentation	I.	<i>Argemone</i>
B.	Axile placentation	II.	Tomato
C.	Parietal placentation	III.	<i>Primrose</i>
D.	Free central placentation	IV.	Pea

Choose the **correct** answer from the options given below :

- (1) A-IV, B-III, C-I, D-II
- (2) A-IV, B-II, C-I, D-III
- (3) A-II, B-IV, C-I, D-III
- (4) A-IV, B-II, C-III, D-I

**Answer (2)**

118. Which of the following plant growth regulators is used as herbicide?

- (1) Abscisic acid
- (2) Gibberellin
- (3) 2, 4-D
- (4) Kinetin

**Answer (3)**

119. Given below are two statements :

**Statement I** : When any plane passing through the central axis of the body divides the organism into two identical halves, it is called radial symmetry.

**Statement II** : In phylum Echinodermata, both adults and larvae are radially symmetrical.

In the light of the above statements, choose the **most appropriate** answer from the options given below :

- (1) **Statement I** is correct but **Statement II** is incorrect
- (2) **Statement I** is incorrect but **Statement II** is correct
- (3) Both **Statement I** and **Statement II** are correct
- (4) Both **Statement I** and **Statement II** are incorrect

**Answer (1)**

120. Match **List-I** with **List-II**.

	<b>List-I</b>		<b>List-II</b>
A.	Starch	I.	Fights infection
B.	Antibody	II.	Energy storage
C.	Concanavalin A	III.	Glucose transport
D.	Glut-4	IV.	Lectin

Choose the **correct** answer from the options given below :

- (1) A-II, B-I, C-III, D-IV
- (2) A-I, B-II, C-III, D-IV
- (3) A-I, B-II, C-IV, D-III
- (4) A-II, B-I, C-IV, D-III

**Answer (4)**

121. The number of vertebrae in a human is \_\_\_\_\_.

- (1) 26
- (2) 206
- (3) 7
- (4) 12

**Answer (1)**

122. Which pigment has absorption peak at 700 nm in the photosynthetic reaction centre PS I (P700)?

- (1) Xanthophylls
- (2) Carotenoids
- (3) Chlorophyll b
- (4) Chlorophyll a

**Answer (4)**

123. Arrange the following taxonomic categories in ascending order.

- |             |             |
|-------------|-------------|
| (a) Genus   | (b) Class   |
| (c) Order   | (d) Phylum  |
| (e) Family  | (f) Kingdom |
| (g) Species |             |

Choose the **correct** answer from the options given below :

- (1) (g), (c), (d), (b), (e), (a), (f)
- (2) (f), (c), (b), (g), (d), (e), (a)
- (3) (g), (a), (e), (c), (b), (d), (f)
- (4) (a), (c), (d), (g), (f), (b), (e)

**Answer (3)**

124. Match **List-I** with **List-II**.

	List-I		List-II
A.	Family	I.	Sapindales
B.	Genus	II.	Dicotyledonae
C.	Class	III.	Anacardiaceae
D.	Phylum	IV.	Angiospermae
E.	Order	V.	<i>Mangifera</i>

Choose the **correct** answer from the options given below :

- |                                 |                                 |
|---------------------------------|---------------------------------|
| (1) A-II, B-III, C-V, D-I, E-IV | (2) A-III, B-V, C-II, D-IV, E-I |
| (3) A-I, B-V, C-II, D-IV, E-III | (4) A-II, B-I, C-III, D-IV, E-V |

**Answer (2\*) (Conceptual errata)**

125. Arrange the following elements in descending order of their contribution to percentage weight of the human body.

- (a) Oxygen
- (b) Carbon
- (c) Hydrogen
- (d) Nitrogen

Choose the **correct** answer from the options given below :

- |                        |                        |
|------------------------|------------------------|
| (1) (b), (c), (d), (a) | (2) (b), (a), (c), (d) |
| (3) (a), (b), (c), (d) | (4) (c), (a), (b), (d) |

**Answer (3)**

126. Match **List-I** with **List-II**.

	<b>List-I</b>		<b>List-II</b>
A.	Cristae	I.	Flat membrane sacs in stroma of chloroplast
B.	Cisternae	II.	Infoldings in mitochondria
C.	Thylakoids	III.	Cell membrane
D.	Phospholipid	IV.	Disc shaped sacs in the Golgi apparatus

Choose the **correct** answer from the options given below:

- (1) A-II, B-IV, C-III, D-I  
 (2) A-IV, B-III, C-I, D-II  
 (3) A-III, B-IV, C-I, D-II  
 (4) A-II, B-IV, C-I, D-III

**Answer (4)**

127. The number of action potentials generated by sino-atrial node (SAN) in a healthy human is \_\_\_\_\_ per minute.

- (1) 100 – 110  
 (2) 120 - 140  
 (3) 28 – 30  
 (4) 70 – 75

**Answer (4)**

128. Symbiotic association between fungi and algae are called \_\_\_\_\_.

- (1) mycorrhiza  
 (2) chrysophytes  
 (3) lichens  
 (4) sponges

**Answer (3)**

129. How many molecules of pyruvic acid are produced at the end of glycolysis from 206 molecules of glucose?

- (1) 103  
 (2) 412  
 (3) 206  
 (4) 309

**Answer (2)**

130. Which of the following represents the correct sequence of arrangement of bones in the lower limb of humans?

- (1) Femur-patella-tibia-tarsal  
 (2) Femur-tarsal-patella-tibia  
 (3) Femur-tibia-patella-tarsal  
 (4) Patella-femur-tibia-tarsal

**Answer (1)**

131. Genus represents \_\_\_\_\_.
- (1) a group of closely related species
  - (2) a group of closely related families
  - (3) an individual plant or animal
  - (4) a population of plants and animals

**Answer (1)**

132. The correct sequence of adult cell cycle phases is \_\_\_\_\_.
- (1) G1-S-G2-M
  - (2) S-M-G2-G1
  - (3) G1-G2-S-M
  - (4) G1-M-G2-S

**Answer (1)**

133. Endomembrane system includes \_\_\_\_\_.
- (1) mitochondria, chloroplast, peroxisomes and vacuole
  - (2) Golgi complex, chloroplast, peroxisomes and vacuole
  - (3) endoplasmic reticulum, Golgi complex, lysosomes and vacuole
  - (4) endoplasmic reticulum, chloroplast, peroxisomes and vacuole

**Answer (3)**

134. Photorespiration reaction catalyzed by RuBisCo is shown below:



Identify "X" from the given options:

- (1) Oxaloacetate
- (2) Malate
- (3) Phosphoenolpyruvate
- (4) 2-Phosphoglycolate

**Answer (4)**

135. Which of the following are characteristic features of Solanaceae family?

- (a) Flowers are bisexual and actinomorphic
- (b) Calyx have five sepals and are united
- (c) Androecium have five stamens and are epipetalous
- (d) Ovary is inferior

Choose the **correct** answer from the options given below :

- (1) (a) and (b) only
- (2) (b), (c) and (d) only
- (3) (a), (b) and (c) only
- (4) (d) only

**Answer (3)**

136. Sperm motility is due to \_\_\_\_\_.

- (1) amoeboid movement
- (2) muscular movement
- (3) flagellar movement
- (4) ciliary movement

**Answer (3)**

137. Given below are two statements : one is labelled as **Assertion A** and the other is labelled as **Reason R**.

**Assertion A** : Abingdon tortoise in Galapagos islands became extinct within a decade after goats were introduced.

**Reason R** : Goats were more efficient at browsing than Abingdon tortoise.

In the light of the above statements, choose the **most appropriate** answer from the options given below:

- (1) **A** is correct but **R** is not correct
- (2) **A** is not correct but **R** is correct
- (3) Both **A** and **R** are correct and **R** is the correct explanation of **A**
- (4) Both **A** and **R** are correct but **R** is not the correct explanation of **A**

**Answer (3)**

138. Match **List-I** with **List-II**.

	<b>List-I</b>		<b>List-II</b>
A.	Both species are harmed	I.	Predation
B.	One species is harmed and the other is benefited	II.	Mutualism
C.	Both species are benefited	III.	Competition
D.	One is benefited while the other has no effect	IV.	Commensalism

Choose the **correct** answer from the options given below:

- (1) A-II, B-I, C-IV, D-III
- (2) A-III, B-I, C-II, D-IV
- (3) A-III, B-IV, C-II, D-I
- (4) A-I, B-II, C-III, D-IV

**Answer (2)**

139. Which of the following structure is **not** a part of the male reproductive system?

- (1) Vasa efferentia
- (2) Infundibulum
- (3) Rete testis
- (4) Epididymis

**Answer (2)**

140. Which of the following plant produces non-albuminous seeds?

- (1) Barley
- (2) Pea
- (3) Wheat
- (4) Maize

**Answer (2)**

141. Which of the following statements about lac-operon is **correct**?

- (1) Genes *i*, *z*, *y* and *a* share single common promoter
- (2) Galactose can act as an inducer of lac operon
- (3) Gene *i* is constitutively expressed
- (4) Lactose activates repressor to bind to the operator

**Answer (3)**

142. Which of the following is used as an effective sedative and painkiller for treating post-surgery patients?

- (1) Morphine
- (2) Anti-retroviral drugs
- (3) Interferon
- (4) Antibiotics

**Answer (1)**

143. Which of the following is the **correct** order of arrangement of vertebrate column from the head to toe?

- (1) Cervical vertebra, lumbar vertebra, thoracic vertebra, sacrum
- (2) Cervical vertebra, thoracic vertebra, lumbar vertebra, sacrum
- (3) Cervical vertebra, thoracic vertebra, sacrum, lumbar vertebra
- (4) Sacrum, lumbar vertebra, thoracic vertebra, cervical vertebra

**Answer (2)**

144. Muscle contraction is initiated by a signal sent by the central nervous system by the release of \_\_\_\_\_ .

- (1) cyclic guanine monophosphate
- (2) cyclic adenine monophosphate
- (3) acetyl choline
- (4) acetyl coenzyme A

**Answer (3)**

145. Given below are two statements : one is labelled as **Assertion A** and the other is labelled as **Reason R**.

**Assertion A** : Forelimbs of human and bats are homologous.

**Reason R** : Forelimbs of humans and bats have similar anatomical structure.

In the light of the above statements, choose the **most appropriate** answer from the options given below.

- (1) **A** is true but **R** is false
- (2) **A** is false but **R** is true
- (3) Both **A** and **R** are correct and **R** is the correct explanation of **A**
- (4) Both **A** and **R** are true, but **R** is not the correct explanation of **A**

**Answer (3)**

146. Given below are two statements :

**Statement I** : Down's syndrome is caused by the absence of one of the X-chromosomes.

**Statement II** : Turner's syndrome is caused by the presence of an additional copy of the chromosomes.

In the light of the above statements, choose the **correct** answer from the options given below :

- (1) **Statement I** is correct but **Statement II** is incorrect
- (2) **Statement I** is incorrect but **Statement II** is correct
- (3) Both **Statement I** and **Statement II** are correct
- (4) Both **Statement I** and **Statement II** are incorrect

**Answer (4)**

147. Which of the following statements about the reabsorption process in Henle's loop are **correct**?

- (a) The descending limb of Henle's loop is permeable to water but almost impermeable to electrolytes.
- (b) Urine gets concentrated in Henle's loop.
- (c) Reabsorption of  $\text{Na}^+$  and water takes place in Henle's loop.
- (d) Active or passive transport of electrolytes occurs in the ascending limb of Henle's loop.

Choose the **correct** answer from the options given below:

- (1) (a), (b) and (c) only
- (2) (a), (b) and (d) only
- (3) (a) and (b) only
- (4) (b), (c) and (d) only

**Answer (\*)**

148. If the diploid chromosome number of typical angiosperm is 36, what would be the chromosome number in its endosperm?

- (1) 54
- (2) 72
- (3) 18
- (4) 36

**Answer (1)**

149. Arrange the following in descending order of number of species in the Amazonian rain forest.

- (a) Plants
- (b) Birds
- (c) Fishes
- (d) Invertebrates
- (e) Mammals

Choose the **correct** answer from the options given below :

- (1) (e) > (b) > (a) > (c) > (d)
- (2) (b) > (a) > (d) > (c) > (e)
- (3) (c) > (b) > (d) > (e) > (a)
- (4) (d) > (a) > (c) > (b) > (e)

**Answer (4)**

150. A population of diploid organisms is at Hardy-Weinberg equilibrium. If the frequency of allele A is 0.1, the frequency of AA is \_\_\_\_\_.
- (1) 0.10
  - (2) 0.99
  - (3) 0.01
  - (4) 0.02

**Answer (3)**

151. The opening between the right atrium and the right ventricle is guarded by \_\_\_\_\_.
- (1) semilunar valve
  - (2) sino-atrial node
  - (3) bicuspid valve
  - (4) tricuspid valve

**Answer (4)**

152. Which of the following enzymes synthesizes precursor mRNA?
- (1) RNA polymerase III
  - (2) DNA polymerase
  - (3) RNA polymerase I
  - (4) RNA polymerase II

**Answer (4)**

**Sol.** The RNA polymerase II transcribes precursor of mRNA, the heterogeneous nuclear RNA (hnRNA)

153. Given below are two statements : one is labelled as **Assertion A** and the other is labelled as **Reason R**.  
**Assertion A** : In recombinant DNA technology, lysozyme is used for disrupting bacterial cells while cellulase is for plant cells.

**Reason R** : Isolation of genetic material needs disruption of cells.

In the light of the above statements, choose the **most appropriate** answer from the options given below :

- (1) **A** is correct but **R** is not correct
- (2) **A** is not correct but **R** is correct
- (3) Both **A** and **R** are correct and **R** is the correct explanation of **A**
- (4) Both **A** and **R** are correct but **R** is not the correct explanation of **A**

**Answer (3)**

154. Which of the following hormone is **not** secreted by human placenta?
- (1) Progesterone
  - (2) LH
  - (3) hCG
  - (4) Estrogen

**Answer (2)**

155. Colostrum, secreted by mother during initial days of lactation, is abundant in \_\_\_\_\_.
- (1) IgA
  - (2) IgD
  - (3) IgG
  - (4) IgM

**Answer (1)**

156. Consider a population of 10 million cells. Given the per-capita birth rate of 0.002 (per unit time) and the per-capita death rate of 0.002 (per unit time), the expected number of cells after 10 generations is \_\_\_\_\_.
- (1) 10 million
  - (2) 100 million
  - (3) 1 million
  - (4) 5 million

**Answer (1)**

157. Given below are two statements :

**Statement I** : Plasmids are autonomously replicating DNA.

**Statement II** : Plasmids are extrachromosomal DNA.

In the light of the above statements, choose the **most appropriate** answer from the options given below :

- (1) **Statement I** is correct but **Statement II** is incorrect
- (2) **Statement I** is incorrect but **Statement II** is correct
- (3) Both **Statement I** and **Statement II** are correct
- (4) Both **Statement I** and **Statement II** are incorrect

**Answer (3)**

158. During PCR, primers bind to the DNA strands in the \_\_\_\_\_ step.
- (1) annealing
  - (2) ligation
  - (3) denaturation
  - (4) extension

**Answer (1)**

159. Match **List-I** with **List-II**.

	<b>List-I</b>		<b>List-II</b>
A.	Transformation	I.	Restriction enzyme
B.	Cloning site	II.	Transfer DNA to host bacteria
C.	Selection	III.	Replication
D.	Ori	IV.	Antibiotic

Choose the **correct** answer from the options given below:

- (1) A-III, B-IV, C-II, D-I
- (2) A-IV, B-I, C-III, D-II
- (3) A-II, B-I, C-IV, D-III
- (4) A-I, B-II, C-IV, D-III

**Answer (3)**

160. Adaptive radiation in placental mammals and Australian Marsupials leading to similarity between distant species is an example of \_\_\_\_\_.

- (1) founder effect
- (2) genetic drift
- (3) divergent evolution
- (4) convergent evolution

**Answer (4)**

161. The covering of ovum at ovulation is \_\_\_\_\_.

- (1) zona pellucida
- (2) chorion
- (3) endometrium
- (4) zona radiata

**Answer (1)**

162. Which of the following statements are **Correct** ?

- (a) Energy flow from producers to consumers is unidirectional
- (b) Energy pyramid can never be inverted
- (c) Transfer of energy follows the 1% law

Choose the **correct** answer from the options given below :

- (1) (a) and (c) only
- (2) (b) and (c) only
- (3) (a), (b) and (c)
- (4) (a) and (b) only

**Answer (4)**

163. How many theca are present in each lobe of a typical bilobed angiosperm anther ?

- (1) 8
- (2) 12
- (3) 2
- (4) 6

**Answer (3)**

164. Which of the following statements is **correct** about *Plasmodium*?

- (1) Gametocytes develop in mosquito gut
- (2) Fertilization takes place in mosquito gut
- (3) Reproduces sexually in liver cells
- (4) Reproduces sexually in RBCs

**Answer (2)**

165. For a person with blood group 'O', which of the following is **not** a possible combination of parents' blood group genotypes?

- (1) Father :  $I^B i$  and Mother :  $I^B i$
- (2) Father :  $I^A I^B$  and Mother :  $I^A i$
- (3) Father :  $I^A i$  and Mother :  $I^B i$
- (4) Father :  $I^A i$  and Mother :  $I^A i$

**Answer (2)**

166. Which of the following is used as a clot buster?

- (1) Cyclosporin A
- (2) Statins
- (3) Streptokinase
- (4) Penicillin

**Answer (3)**

167. Which of the following disease is **not** sexually transmitted?

- (1) Gonorrhoea
- (2) Genital warts
- (3) Syphilis
- (4) Tuberculosis

**Answer (4)**

168. Given below are two statements : one is labelled as **Assertion A** and the other is labelled as **Reason R**.

**Assertion A** : In an experiment, Mendel observed that the F<sub>1</sub> progeny plants are all tall and none are dwarf.

**Reason R** : Stem height is a contrasting trait, with tall being dominant and dwarf being recessive.

In the light of the above statements, choose the **most appropriate** answer from the options given below :

- (1) **A** is correct but **R** is not correct
- (2) **A** is not correct but **R** is correct
- (3) Both **A** and **R** are correct and **R** is the correct explanation of **A**
- (4) Both **A** and **R** are correct but **R** is not the correct explanation of **A**

**Answer (3)**

169. The method of directly of injecting a sperm into ovum in assisted reproductive technology is called :

- (1) Intra cytoplasmic sperm injection (ICSI)
- (2) Embryo transfer (ET)
- (3) Gamete intra fallopian transfer (GIFT)
- (4) Zygote intra fallopian transfer (ZIFT)

**Answer (1)**

170. The inactive form of Bt toxin is converted to the active form in the insect gut \_\_\_\_\_
- (1) by proteases
  - (2) by nucleases
  - (3) due to alkaline pH
  - (4) due to acidic pH

**Answer (3)**

171. Given below are two statements : one is labelled as **Assertion A** and the other is labelled as **Reason R**.  
**Assertion A** : The logistic growth model of populations is considered more realistic than the exponential growth model.

**Reason R** : Resources are finite.

In the light of the above statements, choose the **most appropriate** answer from the options given below :

- (1) **A** is correct but **R** is not correct
- (2) **A** is not correct but **R** is correct
- (3) Both **A** and **R** are correct and **R** is the correct explanation of **A**
- (4) Both **A** and **R** are correct but **R** is not the correct explanation of **A**

**Answer (3)**

172. Which of the following are secondary lymphoid organs?

- |                 |             |
|-----------------|-------------|
| (a) Bone marrow | (b) Tonsils |
| (c) Spleen      | (d) Thymus  |

Choose the correct answer from the options given below:

- (1) (b) and (d) only
- (2) (a) and (d) only
- (3) (a) and (b) only
- (4) (b) and (c) only

**Answer (4)**

173. Which of the following in female gametophyte of an angiosperm helps in guiding the pollen tube for fertilizing the eggs?

- (1) Central cells
- (2) Polar nucleus
- (3) Antipodals
- (4) Synergids

**Answer (4)**

174. Given below are two statements:

**Statement I** : Ovulation is caused by LH surge leading to rupture of Graafian follicles.

**Statement II**: Graafian follicle remaining after ovulation transform into corpus luteum and secretes large amount of estrogen.

In the light of the above statements, choose the **most appropriate** answer from the options given below:

- (1) **Statement I** is correct but **Statement II** is incorrect
- (2) **Statement I** is incorrect but **Statement II** is correct
- (3) Both **Statement I** and **Statement II** are correct
- (4) Both **Statement I** and **Statement II** are incorrect

**Answer (1)**

175. Given below are two statements :

**Statement I** : Modern *Homo sapiens* arose in Australia and moved across continents.

**Statement II** : *Homo sapiens* arose around 75000 to 10000 years ago.

In the light of the above statements, choose the **most appropriate** answer from the options given below :

- (1) **Statement I** is correct but **Statement II** is incorrect
- (2) **Statement I** is incorrect but **Statement II** is correct
- (3) Both **Statement I** and **Statement II** are correct
- (4) Both **Statement I** and **Statement II** are incorrect

**Answer (2)**

176. Which of the following are primary consumers in a food chain?

- (1) Herbivores
- (2) Carnivores
- (3) Parasites
- (4) Predators

**Answer (1)**

177. Which of the following is **not** evidence for evolution?

- (1) Embryological support for evolution as proposed by Ernst Heckel
- (2) Divergent evolution of anatomical structures such as forelimbs
- (3) Convergent evolution of traits like wings of birds and butterflies
- (4) Paleontological evidence from fossil records

**Answer (1, 3\*)**

178. Sponges exchange  $O_2$  with  $CO_2$  by \_\_\_\_\_.

- (1) tracheal tubes
- (2) gills
- (3) simple diffusion over their entire body surfaces
- (4) moist cuticle

**Answer (3)**

179. Match **List-I** with **List-II**.

<b>List-I</b>	<b>List-II</b>
(A) Excess growth hormone	(I) Reabsorption of water and electrolytes in kidney
(B) Luteinizing hormone	(II) Contraction of uterus during child birth
(C) Vasopressin	(III) Acromegaly
(D) Oxytocin	(IV) Ovulation

Choose the **correct** answer from the options given below:

- (1) A-II, B-IV, C-I, D-III
- (2) A-IV, B-III, C-I, D-II
- (3) A-III, B-IV, C-II, D-I
- (4) A-III, B-IV, C-I, D-II

**Answer (4)**

180. Natural selection can lead to \_\_\_\_\_.

- (a) stabilisation (b) genetic drift  
(c) directional change (d) disruption

Choose the **correct** answer from the options given below :

- (1) (a), (b), (c) and (d)  
(2) (a) and (c) only  
(3) (a) only  
(4) (a), (c) and (d) only

**Answer (4)**

